

For Research Use Only

# CALCB Polyclonal antibody, PBS Only

Catalog Number: 23890-1-PBS



## Basic Information

**Catalog Number:**

23890-1-PBS

**Size:**

100ug, Concentration: 1 mg/ml by Nanodrop;

**Source:**

Rabbit

**Isotype:**

IgG

**Immunogen Catalog Number:**

AG20926

**GenBank Accession Number:**

BC008428

**GeneID (NCBI):**

797

**UNIPROT ID:**

P10092

**Full Name:**

calcitonin-related polypeptide beta

**Calculated MW:**

127 aa, 14 kDa

**Purification Method:**

Antigen Affinity purified

## Applications

**Tested Applications:**

IHC, Indirect ELISA

**Species Specificity:**

human, mouse

## Storage

**Storage:**

Store at -80°C.

**Storage Buffer:**

PBS only, pH7.3

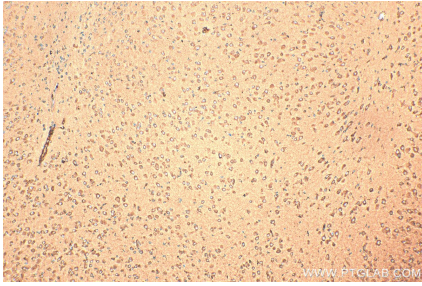
For technical support and original validation data for this product please contact:

T: 1 (888) 4PTGLAB (1-888-478-4522) (toll free in USA), or 1(312) 455-8498 (outside USA)

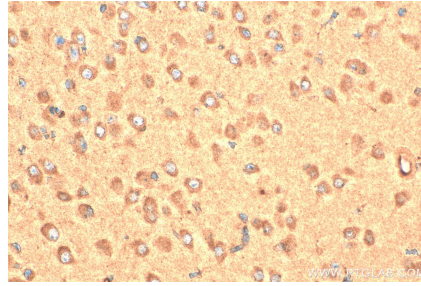
E: [proteintech@ptglab.com](mailto:proteintech@ptglab.com)  
W: [ptglab.com](http://ptglab.com)

This product is exclusively available under Proteintech Group brand and is not available to purchase from any other manufacturer.

## Selected Validation Data



Immunohistochemical analysis of paraffin-embedded mouse brain tissue slide using 23890-1-AP (CALCB antibody) at dilution of 1:200 (under 10x lens). Heat mediated antigen retrieval with Tris-EDTA buffer (pH 9.0). This data was developed using the same antibody clone with 23890-1-PBS in a different storage buffer formulation.



Immunohistochemical analysis of paraffin-embedded mouse brain tissue slide using 23890-1-AP (CALCB antibody) at dilution of 1:200 (under 40x lens). Heat mediated antigen retrieval with Tris-EDTA buffer (pH 9.0). This data was developed using the same antibody clone with 23890-1-PBS in a different storage buffer formulation.