

For Research Use Only

CEP55 Polyclonal antibody

Catalog Number: 23891-1-AP

Featured Product

13 Publications



Basic Information

Catalog Number:

23891-1-AP

Size:

150ul, Concentration: 1000 ug/ml by Nanodrop and 420 ug/ml by Bradford method using BSA as the standard;

Source:

Rabbit

Isotype:

IgG

Immunogen Catalog Number:

AG20940

GenBank Accession Number:

BC008947

GeneID (NCBI):

55165

UNIPROT ID:

Q53EZ4

Full Name:

centrosomal protein 55kDa

Calculated MW:

54 kDa

Observed MW:

47-55 kDa

Purification Method:

Antigen Affinity purified

Recommended Dilutions:

WB 1:500-1:2000

IP 0.5-4.0 ug for 1.0-3.0 mg of total protein lysate

IHC 1:20-1:200

IF/ICC 1:200-1:800

Applications

Tested Applications:

WB, IHC, IF/ICC, IP, ELISA

Cited Applications:

WB, IHC, IF, IP

Species Specificity:

human, mouse, rat

Cited Species:

human, mouse

Note-IHC: suggested antigen retrieval with TE buffer pH 9.0; (*) Alternatively, antigen retrieval may be performed with citrate buffer pH 6.0

Positive Controls:

WB : HEK-293 cells, HeLa cells, human testis tissue, mouse testis tissue, Jurkat cells

IP : mouse testis tissue,

IHC : human testis tissue,

IF/ICC : HepG2 cells,

Background Information

CEP55, also named as C10orf3 and URCC6, is a 55 kDa protein which located in the centrosome in interphase cells and recruited to the midbody during cytokinesis, is essential for completion of cell abscission. It plays a role in mitotic exit and cytokinesis. CEP55 has two isoforms with the MW of 47 and 55 kDa.

Notable Publications

Author	Pubmed ID	Journal	Application
Zewei Tu	36096781	BMC Cancer	WB
Zi Ye	32565973	Oncol Lett	IHC
Kun Gao	29743530	Cell Death Dis	WB,IP,IF

Storage

Storage:

Store at -20°C. Stable for one year after shipment.

Storage Buffer:

PBS with 0.02% sodium azide and 50% glycerol pH 7.3.

Aliquoting is unnecessary for -20°C storage

*** 20ul sizes contain 0.1% BSA

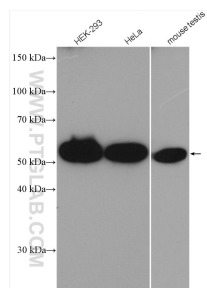
For technical support and original validation data for this product please contact:

T: 1 (888) 4PTGLAB (1-888-478-4522) (toll free in USA), or 1(312) 455-8498 (outside USA)

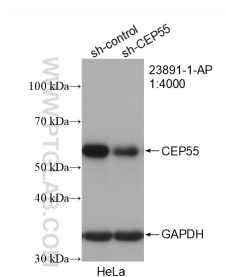
E: proteintech@ptglab.com
W: ptglab.com

This product is exclusively available under Proteintech Group brand and is not available to purchase from any other manufacturer.

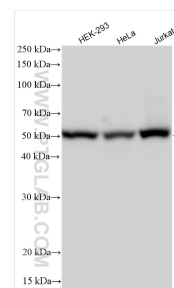
Selected Validation Data



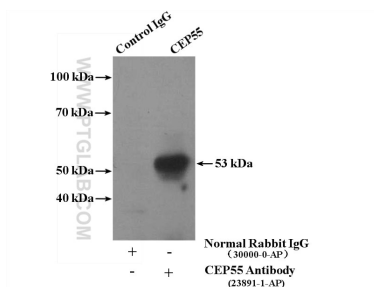
Various lysates were subjected to SDS PAGE followed by western blot with 23891-1-AP (CEP55 antibody) at dilution of 1:1000 incubated at room temperature for 1.5 hours.



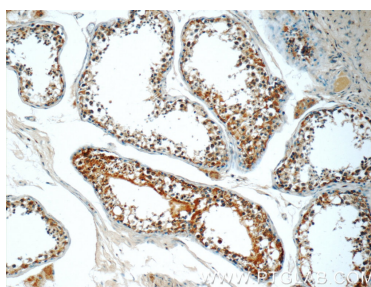
WB result of CEP55 antibody (23891-1-AP; 1:4000; incubated at room temperature for 1.5 hours) with sh-Control and sh-CEP55 transfected HeLa cells.



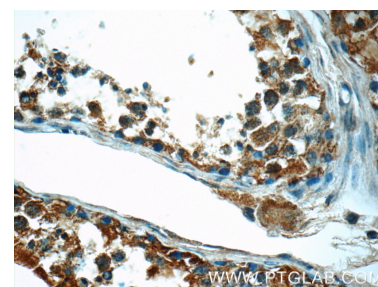
Various lysates were subjected to SDS PAGE followed by western blot with 23891-1-AP (CEP55 antibody) at dilution of 1:4000 incubated at room temperature for 1.5 hours.



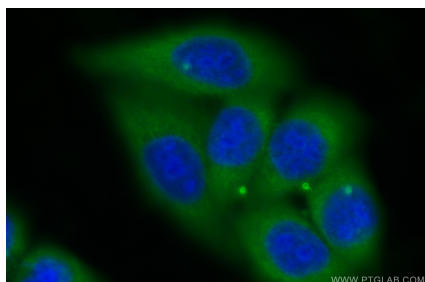
IP result of anti-CEP55 (IP:23891-1-AP, 4ug; Detection:23891-1-AP 1:500) with mouse testis tissue lysate 4000ug.



Immunohistochemical analysis of paraffin-embedded human testis tissue slide using 23891-1-AP (CEP55 Antibody) at dilution of 1:50 (under 10x lens).



Immunohistochemical analysis of paraffin-embedded human testis tissue slide using 23891-1-AP (CEP55 Antibody) at dilution of 1:50 (under 40x lens).



Immunofluorescent analysis of (-20°C Ethanol) fixed HepG2 cells using CEP55 antibody (23891-1-AP) at dilution of 1:400 and CoraLite®488-Conjugated AffiniPure Goat Anti-Rabbit IgG(H+L) (SA00013-2).