

For Research Use Only

N4BP2 Polyclonal antibody, PBS Only

Catalog Number: 23892-1-PBS



Basic Information

Catalog Number:

23892-1-PBS

Size:

100ug , Concentration: 1 mg/ml by Nanodrop;

Source:

Rabbit

Isotype:

IgG

Immunogen Catalog Number:

AG20943

GenBank Accession Number:

BC126466

GeneID (NCBI):

55728

UNIPROT ID:

Q86UW6

Full Name:

NEDD4 binding protein 2

Calculated MW:

1770 aa, 199 kDa

Observed MW:

199 kDa

Purification Method:

Antigen Affinity purified

Applications

Tested Applications:

WB, IHC, Indirect ELISA

Species Specificity:

human, rat

Background Information

N4BP2 (Nedd4 binding protein 2) is a Bcl-3 binding protein, which contains a polynucleotide kinase domain (PNK) at the N-terminus and a Small MutS Related (Smr) domain with nicking endonuclease activity near C-terminus. N4BP2 was at higher levels in a majority of tumor tissues examined, relative to paired normal tissues (PMID: 17626640).

Storage

Storage:

Store at -80°C.

Storage Buffer:

PBS only, pH7.3

For technical support and original validation data for this product please contact:

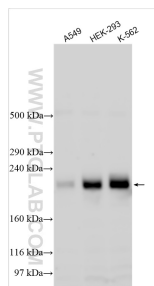
T: 1 (888) 4PTGLAB (1-888-478-4522) (toll free in USA), or 1(312) 455-8498 (outside USA)

E: proteintech@ptglab.com

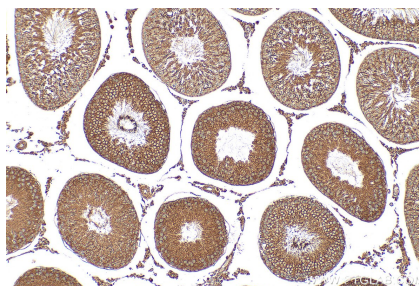
W: ptglab.com

This product is exclusively available under Proteintech Group brand and is not available to purchase from any other manufacturer.

Selected Validation Data



Various lysates were subjected to SDS PAGE followed by western blot with 23892-1-AP (N4BP2 antibody) at dilution of 1:1500 incubated at room temperature for 1.5 hours. This data was developed using the same antibody clone with 23892-1-PBS in a different storage buffer formulation.



Immunohistochemical analysis of paraffin-embedded rat testis tissue slide using 23892-1-AP (N4BP2 antibody) at dilution of 1:200 (under 10x lens). Heat mediated antigen retrieval with Tris-EDTA buffer (pH 9.0). This data was developed using the same antibody clone with 23892-1-PBS in a different storage buffer formulation.