

For Research Use Only

ATAD2 Polyclonal antibody

Catalog Number: 23894-1-AP

Featured Product

5 Publications



Basic Information

Catalog Number: 23894-1-AP	GenBank Accession Number: BC113656	Purification Method: Antigen affinity purification
Size: 150ul, Concentration: 500 µg/ml by Nanodrop and 300 µg/ml by Bradford method using BSA as the standard;	GeneID (NCBI): 29028	Recommended Dilutions: WB 1:500-1:1000 IP 0.5-4.0 ug for IP and 1:500-1:1000 for WB
Source: Rabbit	Full Name: ATPase family, AAA domain containing 2	IF 1:50-1:500
Isotype: IgG	Calculated MW: 1390 aa, 159 kDa	
Immunogen Catalog Number: AG20947	Observed MW: 159 kDa	

Applications

Tested Applications: IF, IP, WB, ELISA	Positive Controls:
Cited Applications: IF, IP, WB	WB: HeLa cells,
Species Specificity: human	IP: HeLa cells,
Cited Species: human	IF: HeLa cells,

Background Information

ATAD2 is one of them encoding a conserved factor harbouring an AAA type ATPase domain and a bromodomain. ATAD2 controls chromatin dynamics, genome transcriptional activities and apoptotic cell response. This protein has 2 isoforms produced by alternative splicing.

Notable Publications

Author	Pubmed ID	Journal	Application
Shalabh Shukla	36404917	iScience	WB
Vanesa Alvarez	36680776	Cell Rep	
Yalin Tong	35085891	Biochem Biophys Res Commun	WB,IP

Storage

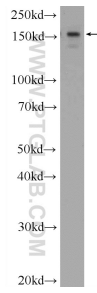
Storage:
Store at -20°C. Stable for one year after shipment.
Storage Buffer:
PBS with 0.02% sodium azide and 50% glycerol pH 7.3.
Aliquoting is unnecessary for -20°C storage

*** 20ul sizes contain 0.1% BSA

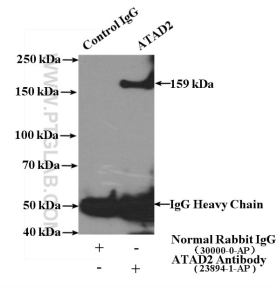
For technical support and original validation data for this product please contact:
T: 1 (888) 4PTGLAB (1-888-478-4522) (toll free in USA), or 1(312) 455-8498 (outside USA) E: proteintech@ptglab.com W: ptglab.com

This product is exclusively available under Proteintech Group brand and is not available to purchase from any other manufacturer.

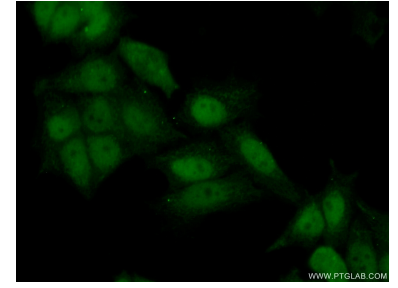
Selected Validation Data



HeLa cells were subjected to SDS PAGE followed by western blot with 23894-1-AP (ATAD2 Antibody) at dilution of 1:600 incubated at room temperature for 1.5 hours.



IP Result of anti-ATAD2 (IP:23894-1-AP, 4ug; Detection:23894-1-AP 1:500) with HeLa cells lysate 3200ug.



Immunofluorescent analysis of (10% Formaldehyde) fixed HeLa cells using 23894-1-AP (ATAD2 antibody) at dilution of 1:50 and Alexa Fluor 488-conjugated AffiniPure Goat Anti-Rabbit IgG(H+L).