

For Research Use Only

# CEBPD Polyclonal antibody

Catalog Number: 23895-1-AP



## Basic Information

**Catalog Number:**

23895-1-AP

**Size:**

150ul , Concentration: 550 µg/ml by Nanodrop;

**Source:**

Rabbit

**Isotype:**

IgG

**Immunogen Catalog Number:**

AG20953

**GenBank Accession Number:**

BC105109

**GeneID (NCBI):**

1052

**UNIPROT ID:**

P49716

**Full Name:**

CCAAT/enhancer binding protein (C/EBP), delta

**Calculated MW:**

269 aa, 28 kDa

**Observed MW:**

28-36 kDa

**Purification Method:**

Antigen Affinity purified

**Recommended Dilutions:**

WB 1:500-1:2000

## Applications

**Tested Applications:**

WB, ELISA

**Species Specificity:**

human, mouse

**Positive Controls:**

WB : HeLa cells, MCF-7 cells, MDA-MB-231 cells, SK-BR-3 cells

## Storage

**Storage:**

Store at -20°C. Stable for one year after shipment.

**Storage Buffer:**

PBS with 0.02% sodium azide and 50% glycerol, pH7.3

Aliquoting is unnecessary for -20°C storage

\*\*\* 20ul sizes contain 0.1% BSA

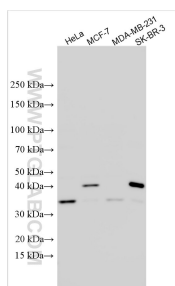
For technical support and original validation data for this product please contact:

T: 1 (888) 4PTGLAB (1-888-478-4522) (toll free in USA), or 1(312) 455-8498 (outside USA)

E: [proteintech@ptglab.com](mailto:proteintech@ptglab.com)  
W: [ptglab.com](http://ptglab.com)

This product is exclusively available under Proteintech Group brand and is not available to purchase from any other manufacturer.

## Selected Validation Data



Various lysates were subjected to SDS PAGE followed by western blot with 23895-1-AP (CEBPD antibody) at dilution of 1:1000 incubated at room temperature for 1.5 hours.