

For Research Use Only

CTGF Polyclonal antibody

Catalog Number: 23903-1-AP

13 Publications



Basic Information

Catalog Number:

23903-1-AP

Size:

150ul, Concentration: 500 µg/ml by Nanodrop;

Source:

Rabbit

Isotype:

IgG

Immunogen Catalog Number:

AG20985

GenBank Accession Number:

BC087839

GeneID (NCBI):

1490

UNIPROT ID:

P29279

Full Name:

connective tissue growth factor

Calculated MW:

349 aa, 38 kDa

Observed MW:

70 kDa

Purification Method:

Antigen affinity purification

Recommended Dilutions:

WB 1:500-1:2000

IP 0.5-4.0 µg for 1.0-3.0 mg of total protein lysate

IHC 1:50-1:500

Applications

Tested Applications:

WB, IHC, IP, ELISA

Cited Applications:

WB, IHC, IF

Species Specificity:

human, mouse

Cited Species:

human, mouse, rat

Note-IHC: suggested antigen retrieval with TE buffer pH 9.0; (*) Alternatively, antigen retrieval may be performed with citrate buffer pH 6.0

Positive Controls:

WB : mouse heart tissue,

IP : mouse brain tissue,

IHC : mouse heart tissue, human heart tissue, human nephroblastoma tissue, mouse brain tissue

Background Information

CTGF, also known as CCN2, is a member of the CCN family of matricellular proteins. CTGF, a cysteine-rich, matrix-associated, heparin-binding protein, is widely expressed in various human tissues and organs. CTGF has important roles in many biological processes, including cell adhesion, migration, proliferation, angiogenesis, skeletal development, and tissue wound repair, and is critically involved in fibrotic disease and several forms of cancers. In western blotting, there are three different forms of CTGF reported: monomeric forms at approximately 36-38 kDa, homodimeric forms at approximately 70 kDa, and lower molecular mass fragment forms (PMID: 14592956).

Notable Publications

Author	Pubmed ID	Journal	Application
Kai Yang	27942222	Onco Targets Ther	WB
Xinliang Zou	35900670	J Cardiovasc Transl Res	WB,IHC
Shigehisa Aoki	30406776	Biomater Sci	WB,IHC

Storage

Storage:

Store at -20°C. Stable for one year after shipment.

Storage Buffer:

PBS with 0.02% sodium azide and 50% glycerol pH 7.3.

Aliquoting is unnecessary for -20°C storage

*** 20ul sizes contain 0.1% BSA

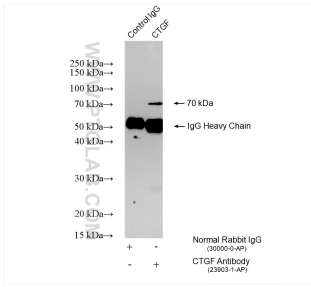
For technical support and original validation data for this product please contact:

T: 1 (888) 4PTGLAB (1-888-478-4522) (toll free in USA), or 1(312) 455-8498 (outside USA)

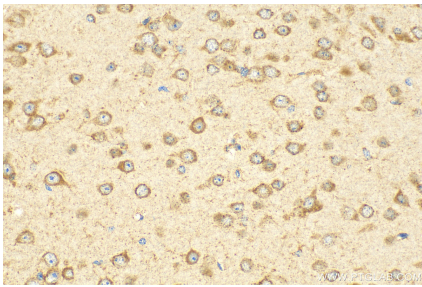
E: proteintech@ptglab.com
W: ptglab.com

This product is exclusively available under Proteintech Group brand and is not available to purchase from any other manufacturer.

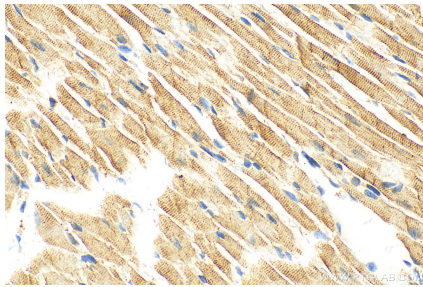
Selected Validation Data



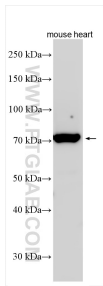
IP result of anti-CTGF (IP:23903-1-AP, 4ug; Detection:23903-1-AP 1:1000) with mouse brain tissue lysate 1800 ug.



Immunohistochemical analysis of paraffin-embedded mouse brain tissue slide using 23903-1-AP (CTGF antibody) at dilution of 1:200 (under 40x lens). Heat mediated antigen retrieval with Tris-EDTA buffer (pH 9.0).



Immunohistochemical analysis of paraffin-embedded mouse heart tissue slide using 23903-1-AP (CTGF antibody) at dilution of 1:200 (under 40x lens). Heat mediated antigen retrieval with Tris-EDTA buffer (pH 9.0).



Various lysates were subjected to SDS PAGE followed by western blot with 23903-1-AP (CTGF antibody) at dilution of 1:1000 incubated at room temperature for 1.5 hours.