

For Research Use Only

MOK Polyclonal antibody

Catalog Number: 23926-1-AP

Featured Product

2 Publications



Basic Information

Catalog Number:

23926-1-AP

Size:

150ul, Concentration: 700 ug/ml by Nanodrop and 460 ug/ml by Bradford method using BSA as the standard;

Source:

Rabbit

Isotype:

IgG

Immunogen Catalog Number:

AG20849

GenBank Accession Number:

BC053536

GeneID (NCBI):

5891

UNIPROT ID:

Q9UQ07

Full Name:

renal tumor antigen

Calculated MW:

231 aa, 27 kDa

Observed MW:

42 kDa, 85 kDa

Purification Method:

Antigen affinity purification

Recommended Dilutions:

WB 1:500-1:2000

IHC 1:20-1:200

IF/ICC 1:50-1:500

Applications

Tested Applications:

WB, IHC, IF/ICC, FC (Intra), ELISA

Cited Applications:

WB

Species Specificity:

human

Cited Species:

human

Note-IHC: suggested antigen retrieval with TE buffer pH 9.0; (*) Alternatively, antigen retrieval may be performed with citrate buffer pH 6.0

Positive Controls:

WB : HeLa cells, HepG2 cells

IHC : human hepatocirrhosis tissue, human heart tissue

IF/ICC : HeLa cells,

Notable Publications

Author	Pubmed ID	Journal	Application
Jing Hang	36248973	Front Oncol	WB
Ran Li	28073914	J Biol Chem	WB

Storage

Storage:

Store at -20°C. Stable for one year after shipment.

Storage Buffer:

PBS with 0.02% sodium azide and 50% glycerol, pH7.3

Aliquoting is unnecessary for -20°C storage

*** 20ul sizes contain 0.1% BSA

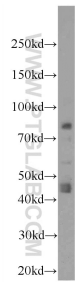
For technical support and original validation data for this product please contact:

T: 1 (888) 4PTGLAB (1-888-478-4522) (toll free in USA), or 1(312) 455-8498 (outside USA)

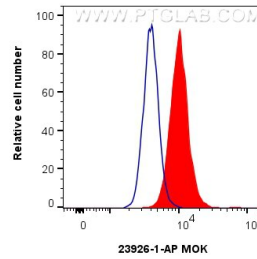
E: proteintech@ptglab.com
W: ptglab.com

This product is exclusively available under Proteintech Group brand and is not available to purchase from any other manufacturer.

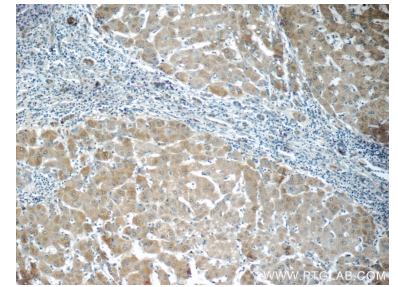
Selected Validation Data



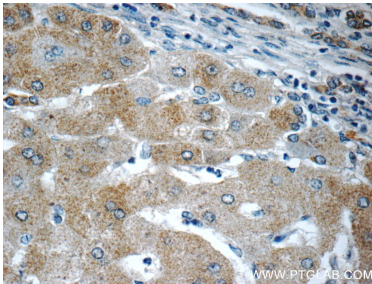
HeLa cells were subjected to SDS PAGE followed by western blot with 23926-1-AP (MOK antibody at dilution of 1:1000 incubated at room temperature for 1.5 hours.



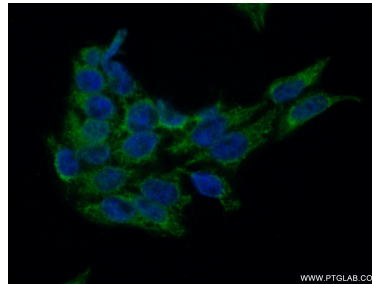
1×10^6 HeLa cells were intracellularly stained with 0.25 ug MOK Polyclonal antibody (23926-1-AP) and CoraLite®488-Conjugated Goat Anti-Rabbit IgG(H+L) (SA00013-2)(red), or 0.25 ug Isotype Control (blue). Cells were fixed with 4% PFA and permeabilized with Flow Cytometry Perm Buffer (PF00011-C).



Immunohistochemical analysis of paraffin-embedded human hepatocirrhosis tissue slide using 23926-1-AP (MOK antibody at dilution of 1:50 (under 10x lens).



Immunohistochemical analysis of paraffin-embedded human hepatocirrhosis tissue slide using 23926-1-AP (MOK antibody at dilution of 1:50 (under 40x lens).



Immunofluorescent analysis of (-20°C Ethanol) fixed HeLa cells using 23926-1-AP (MOK antibody) at dilution of 1:50 and Alexa Fluor 488-conjugated AffiniPure Goat Anti-Rabbit IgG(H+L).