

For Research Use Only

PRPF6 Polyclonal antibody

Catalog Number: 23929-1-AP

Featured Product

5 Publications



Basic Information

Catalog Number:

23929-1-AP

Size:

150ul, Concentration: 600 ug/ml by Nanodrop;

Source:

Rabbit

Isotype:

IgG

Immunogen Catalog Number:

AG13817

GenBank Accession Number:

BC001666

GeneID (NCBI):

24148

UNIPROT ID:

O94906

Full Name:

PRP6 pre-mRNA processing factor 6 homolog (S. cerevisiae)

Calculated MW:

941 aa, 107 kDa

Observed MW:

100 kDa

Purification Method:

Antigen Affinity purified

Recommended Dilutions:

WB 1:500-1:2000

IP 0.5-4.0 ug for 1.0-3.0 mg of total protein lysate

IHC 1:20-1:200

Applications

Tested Applications:

WB, IP, IHC, ELISA

Cited Applications:

WB, IHC, IF

Species Specificity:

human, mouse

Cited Species:

human, mouse

Positive Controls:

WB : HEK-293 cells, HeLa cells, NIH/3T3 cells

IP : HeLa cells,

IHC : human testis tissue,

Note-IHC: suggested antigen retrieval with TE buffer pH 9.0; (*) Alternatively, antigen retrieval may be performed with citrate buffer pH 6.0

Background Information

PRPF6 is involved in pre-mRNA splicing as component of the U4/U6-U5 tri-snRNP complex, it can enhance dihydrotestosterone-induced transactivation activity of AR, as well as dexamethasone-induced transactivation activity of NR3C1, but does not affect estrogen-induced transactivation.

Notable Publications

Author	Pubmed ID	Journal	Application
Liliya Nazlamova	36176300	Front Genet	IF, WB
Liliya Nazlamova	33095315	Hum Genet	WB
Wei Liu	33390843	Int J Biol Sci	WB

Storage

Storage:

Store at -20°C. Stable for one year after shipment.

Storage Buffer:

PBS with 0.02% sodium azide and 50% glycerol pH 7.3.

Aliquoting is unnecessary for -20°C storage

*** 20ul sizes contain 0.1% BSA

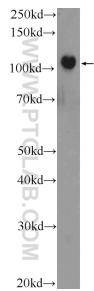
For technical support and original validation data for this product please contact:

T: 1 (888) 4PTGLAB (1-888-478-4522) (toll free in USA), or 1(312) 455-8498 (outside USA)

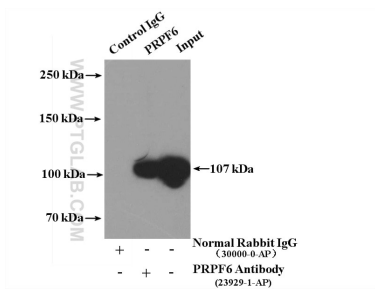
E: proteintech@ptglab.com
W: ptglab.com

This product is exclusively available under Proteintech Group brand and is not available to purchase from any other manufacturer.

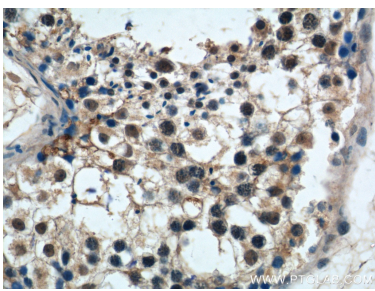
Selected Validation Data



HEK-293 cells were subjected to SDS PAGE followed by western blot with 23929-1-AP (PRPF6 Antibody) at dilution of 1:1000 incubated at room temperature for 1.5 hours.



IP result of anti-PRPF6 (IP:23929-1-AP, 4ug; Detection:23929-1-AP 1:300) with HeLa cells lysate 3200ug.



Immunohistochemical analysis of paraffin-embedded human testis tissue slide using 23929-1-AP (PRPF6 Antibody) at dilution of 1:50 (under 40x lens).