

For Research Use Only

LY6H Polyclonal antibody

Catalog Number: 23933-1-AP



Basic Information

Catalog Number:

23933-1-AP

Size:

150ul , Concentration: 400 ug/ml by Nanodrop and 300 ug/ml by Bradford method using BSA as the standard;

Source:

Rabbit

Isotype:

IgG

Immunogen Catalog Number:

AG20762

GenBank Accession Number:

BC028894

GeneID (NCBI):

4062

UNIPROT ID:

O94772

Full Name:

lymphocyte antigen 6 complex, locus H

Calculated MW:

15 kDa

Observed MW:

16 kDa

Purification Method:

Antigen Affinity purified

Recommended Dilutions:

WB 1:500-1:1000

IHC 1:20-1:200

Applications

Tested Applications:

WB, IHC, ELISA

Species Specificity:

human, mouse

Note-IHC: suggested antigen retrieval with TE buffer pH 9.0; (*) Alternatively, antigen retrieval may be performed with citrate buffer pH 6.0

Positive Controls:

WB : Raji cells,

IHC : human testis tissue, mouse brain tissue

Background Information

LY6H is highly expressed in particular subdivisions of human brain and also in MOLT-3 and -4 acute lymphoblastic leukemia cells. It has some isoforms with MW 14-16 kDa.

Storage

Storage:

Store at -20°C. Stable for one year after shipment.

Storage Buffer:

PBS with 0.02% sodium azide and 50% glycerol pH 7.3.

Aliquoting is unnecessary for -20°C storage

*** 20ul sizes contain 0.1% BSA

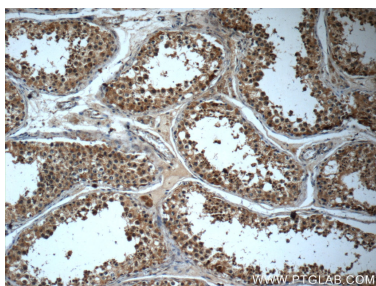
For technical support and original validation data for this product please contact:

T: 1 (888) 4PTGLAB (1-888-478-4522) (toll free in USA), or 1(312) 455-8498 (outside USA)

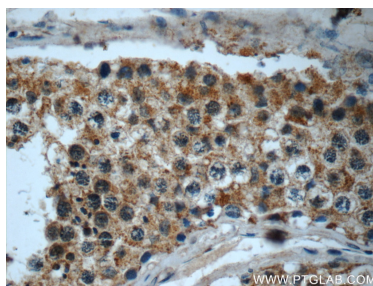
E: proteintech@ptglab.com
W: ptglab.com

This product is exclusively available under Proteintech Group brand and is not available to purchase from any other manufacturer.

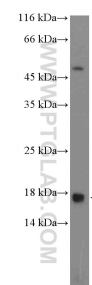
Selected Validation Data



Immunohistochemical analysis of paraffin-embedded human testis slide using 23933-1-AP (LY6H Antibody) at dilution of 1:50 (under 10x lens).



Immunohistochemical analysis of paraffin-embedded human testis slide using 23933-1-AP (LY6H Antibody) at dilution of 1:50 (under 40x lens).



Raji cells were subjected to SDS PAGE followed by western blot with 23933-1-AP (LY6H Antibody) at dilution of 1:600 incubated at room temperature for 1.5 hours.