

For Research Use Only

MTTP/MTP Polyclonal antibody, PBS Only

Catalog Number: 23940-1-PBS



Basic Information

Catalog Number: 23940-1-PBS	GenBank Accession Number: BC062696	Purification Method: Antigen Affinity purified
Size: 100ug , Concentration: 1 mg/ml by Nanodrop;	GeneID (NCBI): 4547	
Source: Rabbit	UNIPROT ID: P55157	
Isotype: IgG	Full Name: microsomal triglyceride transfer protein	
Immunogen Catalog Number: AG21045	Calculated MW: 151aa,17 kDa; 894aa,99 kDa	
	Observed MW: 90-100 kDa	

Applications

Tested Applications:
WB, Indirect ELISA

Species Specificity:
human, mouse, rat

Background Information

MTTP, also known as MTP, belongs to the lipid transfer protein family and forms a heterodimeric complex with protein disulfide isomerase (PDI) to perform lipid transfer functions. MTTP is isolated as a soluble protein from the lumen of a microsomal fraction of liver and intestine. MTTP assembles triglycerides and apoB in the liver and intestine and subsequently produces apoB-containing lipoproteins. Deficiency in MTTP can cause abetalipoproteinemia, characterized by the absence of apoB-containing lipoproteins from the circulatory system (PMID: 10946006, 23475612).

Storage

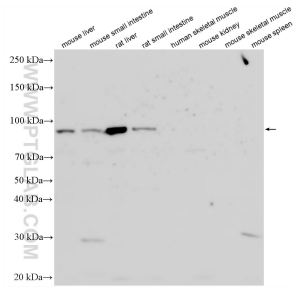
Storage:
Store at -80°C.

Storage Buffer:
PBS only, pH7.3

For technical support and original validation data for this product please contact:
T: 1 (888) 4PTGLAB (1-888-478-4522) (toll free in USA), or 1(312) 455-8498 (outside USA) E: proteintech@ptglab.com
W: ptglab.com

This product is exclusively available under Proteintech Group brand and is not available to purchase from any other manufacturer.

Selected Validation Data



Various lysates were subjected to SDS PAGE followed by western blot with 23940-1-AP (MTTP antibody) at dilution of 1:1500 incubated at room temperature for 1.5 hours. Negative control: human skeletal muscle tissue, mouse kidney tissue, mouse skeletal muscle tissue, mouse spleen tissue. This data was developed using the same antibody clone with 23940-1-PBS in a different storage buffer formulation.