

For Research Use Only

# CHPF N-terminal Polyclonal antibody

Catalog Number: 23953-1-AP

Featured Product

3 Publications



## Basic Information

### Catalog Number:

23953-1-AP

### Size:

150ul, Concentration: 900 ug/ml by Nanodrop and 500 ug/ml by Bradford method using BSA as the standard;

### Source:

Rabbit

### Isotype:

IgG

### Immunogen Catalog Number:

AG20819

### GenBank Accession Number:

BC023531

### GeneID (NCBI):

79586

### UNIPROT ID:

Q8IZ52

### Full Name:

chondroitin polymerizing factor

### Calculated MW:

85 kDa

### Observed MW:

85-90 kDa, 65-70 kDa

### Purification Method:

Antigen Affinity purified

### Recommended Dilutions:

WB 1:500-1:2000

IHC 1:50-1:500

IF/ICC 1:50-1:500

## Applications

### Tested Applications:

WB, IHC, IF/ICC, ELISA

### Cited Applications:

WB, IHC, IF

### Species Specificity:

human, mouse, rat

### Cited Species:

human

**Note-IHC: suggested antigen retrieval with TE buffer pH 9.0; (\*) Alternatively, antigen retrieval may be performed with citrate buffer pH 6.0**

### Positive Controls:

WB : human placenta tissue, mouse skeletal muscle tissue, C6 cells

IHC : mouse heart tissue,

IF/ICC : HepG2 cells,

## Notable Publications

Author	Pubmed ID	Journal	Application
Yin-Hung Chu	34944101	Cells	WB
Qiang-Feng Pan	36042157	J Cell Commun Signal	IHC, WB
Haitao Luo	37851364	Aging (Albany NY)	WB, IHC, IF

## Storage

### Storage:

Store at -20°C. Stable for one year after shipment.

### Storage Buffer:

PBS with 0.02% sodium azide and 50% glycerol pH 7.3.

Aliquoting is unnecessary for -20°C storage

\*\*\* 20ul sizes contain 0.1% BSA

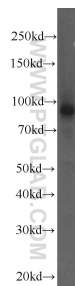
For technical support and original validation data for this product please contact:

T: 1 (888) 4PTGLAB (1-888-478-4522) (toll free in USA), or 1(312) 455-8498 (outside USA)

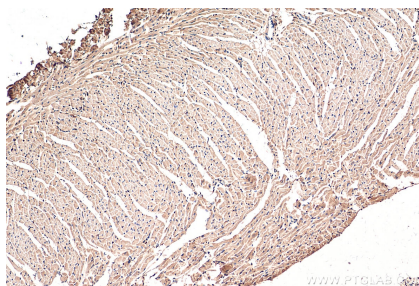
E: [proteintech@ptglab.com](mailto:proteintech@ptglab.com)  
W: [ptglab.com](http://ptglab.com)

This product is exclusively available under Proteintech Group brand and is not available to purchase from any other manufacturer.

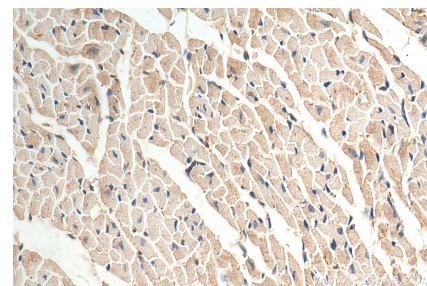
## Selected Validation Data



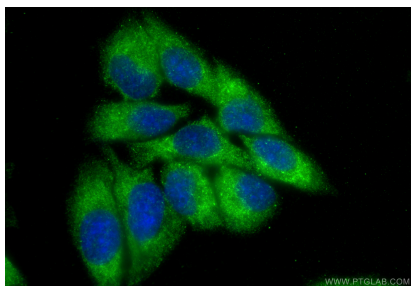
human placenta tissue were subjected to SDS PAGE followed by western blot with 23953-1-AP (CHPF N-terminal antibody) at dilution of 1:1000 incubated at room temperature for 1.5 hours.



Immunohistochemical analysis of paraffin-embedded mouse heart tissue slide using 23953-1-AP (CHPF N-terminal antibody) at dilution of 1:200 (under 10x lens). Heat mediated antigen retrieval with Tris-EDTA buffer (pH 9.0).



Immunohistochemical analysis of paraffin-embedded mouse heart tissue slide using 23953-1-AP (CHPF N-terminal antibody) at dilution of 1:200 (under 40x lens). Heat mediated antigen retrieval with Tris-EDTA buffer (pH 9.0).



Immunofluorescent analysis of (-20°C Ethanol) fixed HepG2 cells using CHPF N-terminal antibody (23953-1-AP) at dilution of 1:200 and CoraLite®488-Conjugated Goat Anti-Rabbit IgG(H+L) (SA00013-2).