

For Research Use Only

BCL3 Polyclonal antibody, PBS Only

Catalog Number: 23959-1-PBS

Featured Product



Basic Information

Catalog Number:

23959-1-PBS

Size:

100ug, Concentration: 1 mg/ml by Nanodrop;

Source:

Rabbit

Isotype:

IgG

Immunogen Catalog Number:

AG21040

GenBank Accession Number:

BC064993

GeneID (NCBI):

602

UNIPROT ID:

P20749

Full Name:

B-cell CLL/lymphoma 3

Calculated MW:

446 aa, 47 kDa

Observed MW:

48-60 kDa

Purification Method:

Antigen affinity purification

Applications

Tested Applications:

WB, IHC, IF/ICC, IP, Indirect ELISA

Species Specificity:

human, mouse

Background Information

BCL3 (B-cell lymphoma 3 protein) has seven ankyrin repeat domains, a proline-rich N terminal domain and a serine- and proline-rich C-terminal domain (PMID: 31930327). BCL3 is an important contributor to chronic inflammatory disease states, such as osteoarthritis and rheumatoid arthritis (PMID: 12483727). BCL3 is a predominantly nuclear protein containing a trans-activation domain, and it can be recruited to NF- κ B-responsive promoters, resulting in transcriptional activation or repression depending on the subunit composition of NF- κ B complexes (PMID: 25089799, PMID: 30135206). BCL3 is known to be overexpressed in human breast cancers and is associated with reduced metastasis-free survival (PMID: 38255248). The predicted molecular weight of the BCL3 protein is 48 kDa. However, due to post-translational modifications (e.g., phosphorylation), its apparent molecular weight often ranges between 55 and 65 kDa (PMID: 9407099, PMID: 12847243).

Storage

Storage:

Store at -80°C.

Storage Buffer:

PBS only, pH7.3

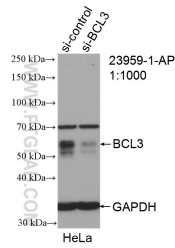
For technical support and original validation data for this product please contact:

T: 1 (888) 4PTGLAB (1-888-478-4522) (toll free in USA), or 1(312) 455-8498 (outside USA)

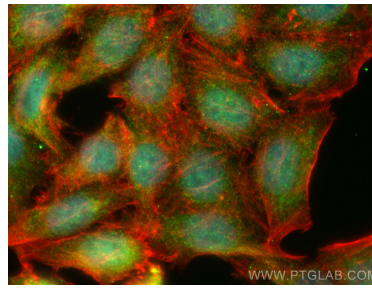
E: proteintech@ptglab.com
W: ptglab.com

This product is exclusively available under Proteintech Group brand and is not available to purchase from any other manufacturer.

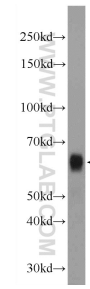
Selected Validation Data



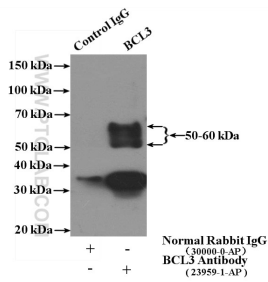
WB result of BCL3 antibody (23959-1-AP; 1:1000; incubated at room temperature for 1.5 hours) with sh-Control and sh-BCL3 transfected HeLa cells. This data was developed using the same antibody clone with 23959-1-PBS in a different storage buffer formulation.



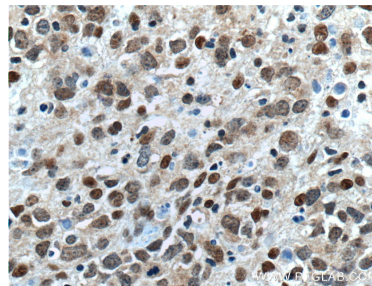
Immunofluorescent analysis of (4% PFA) fixed HepG2 cells using BCL3 antibody (23959-1-AP) at dilution of 1:200 and CoraLite@488-Conjugated AffiniPure Goat Anti-Rabbit IgG(H+L), CL594-phalloidin (red). This data was developed using the same antibody clone with 23959-1-PBS in a different storage buffer formulation.



HEK-293 cells were subjected to SDS PAGE followed by western blot with 23959-1-AP (BCL3 Antibody) at dilution of 1:600 incubated at room temperature for 1.5 hours. This data was developed using the same antibody clone with 23959-1-PBS in a different storage buffer formulation.



IP result of anti-BCL3 (IP:23959-1-AP, 4ug; Detection:23959-1-AP 1:600) with HEK-293 cells lysate 3000ug. This data was developed using the same antibody clone with 23959-1-PBS in a different storage buffer formulation.



Immunohistochemical analysis of paraffin-embedded human lymphoma tissue slide using 23959-1-AP (BCL3 Antibody) at dilution of 1:200 (under 40x lens). Heat mediated antigen retrieval with Tris-EDTA buffer (pH 9.0). This data was developed using the same antibody clone with 23959-1-PBS in a different storage buffer formulation.