

For Research Use Only

CLEC14A Polyclonal antibody

Catalog Number: 23964-1-AP

1 Publications



Basic Information

Catalog Number: 23964-1-AP	GenBank Accession Number: BC031567	Purification Method: Antigen Affinity purified
Size: 150ul , Concentration: 500 µg/ml by Nanodrop and 267 µg/ml by Bradford method using BSA as the standard;	GeneID (NCBI): 161198	Recommended Dilutions: WB 1:1000-1:4000
Source: Rabbit	Full Name: C-type lectin domain family 14, member A	
Isotype: IgG	Calculated MW: 490 aa, 52 kDa	
Immunogen Catalog Number: AG21081	Observed MW: 52 kDa	

Applications

Tested Applications: FC, WB, ELISA	Positive Controls: WB : mouse brain tissue, mouse skeletal muscle tissue, human heart tissue, rat brain tissue
Cited Applications: IHC, WB	
Species Specificity: human, mouse	
Cited Species: human, mouse	

Background Information

CLEC14A is a single-pass type I transmembrane protein whose extracellular domain consists of a C-type lectin-like domain (CTLD), a series of EGF-like domains, and a sushi-like domain (PMID: 23644659). CLEC14A is a member of the C-type lectin domain superfamily that also includes endosialin, thrombomodulin and CD93 (PMID: 16336259). It has been reported that CLEC14A is specifically expressed in endothelial cells and mediates cell to cell adhesion (PMID: 21095181). CLEC14A may be involved in tumor angiogenesis (PMID: 21706054; 23644659).

Notable Publications

Author	Pubmed ID	Journal	Application
Zeyu Su	34107098	FASEB J	WB,IHC

Storage

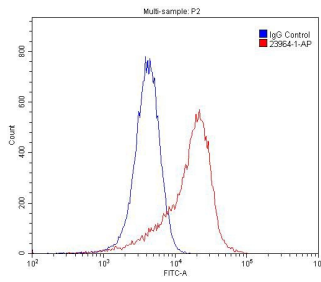
Storage:
Store at -20°C. Stable for one year after shipment.
Storage Buffer:
PBS with 0.02% sodium azide and 50% glycerol pH 7.3.
Aliquoting is unnecessary for -20°C storage

*** 20ul sizes contain 0.1% BSA

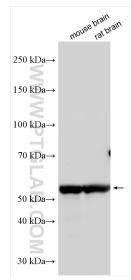
For technical support and original validation data for this product please contact:
T: 1 (888) 4PTGLAB (1-888-478-4522) (toll free in USA), or 1(312) 455-8498 (outside USA)
E: proteintech@ptglab.com
W: ptglab.com

This product is exclusively available under Proteintech Group brand and is not available to purchase from any other manufacturer.

Selected Validation Data



1X10⁶ HUVEC cells were stained with 0.2 μ g CLEC14A antibody (23964-1-AP, red) and control antibody (blue). Fixed with 4% PFA blocked with 3% BSA (30 min). Alexa Fluor 488-conjugated AffiniPure Goat Anti-Rabbit IgG(H+L) with dilution 1:1500.



Various lysates were subjected to SDS PAGE followed by western blot with 23964-1-AP (CLEC14A antibody) at dilution of 1:2000 incubated at room temperature for 1.5 hours.