

For Research Use Only

GR repeat Polyclonal antibody

Catalog Number: 23978-1-AP

Featured Product

28 Publications



Basic Information

Catalog Number:

23978-1-AP

GenBank Accession Number:

GeneID (NCBI):

Purification Method:

Antigen affinity purification

Size:

150ul, Concentration: 400 ug/ml by Nanodrop;

Full Name:

Recommended Dilutions:

WB 1:500-1:2000

Source:

Rabbit

Isotype:

IgG

Applications

Tested Applications:

WB, ELISA

Positive Controls:

WB: Recombinant protein,

Cited Applications:

WB, IHC, IF, Dot Blot

Species Specificity:

human

Cited Species:

human, mouse, zebrafish, drosophila

Background Information

The C9orf72 "GGGGCC" repeat sequence codes five repeat peptide "GA repeat; GAGAGAGAGA", "GP repeat; GPGPGPGPG", "GR repeat; GRGRGRGRG", "AP repeat; APAPAPAPA" and "PR repeat; PRPRPRPRP". It was described previously that aggregated forms of poly-GA and poly-GP proteins do not enter the separation gel (PMID: 26374446). This antibody is used to detect the GR repeated sequence. The recombinant proteins GST-SNRPD1 and 6^{His} tag-SNRPD1 which contains the sequence "GRGRGRGRGRGRGRGR" were used to detect this antibody. Both proteins can be recognized by the antibody 23978-1-AP.

Notable Publications

Author	Pubmed ID	Journal	Application
Ian R A Mackenzie	26374446	Acta Neuropathol	WB, IHC
Junli Gao	36103513	Sci Transl Med	WB
Ryan J H West	32894207	Acta Neuropathol Commun	WB

Storage

Storage:

Store at -20°C. Stable for one year after shipment.

Storage Buffer:

PBS with 0.02% sodium azide and 50% glycerol pH 7.3.

Aliquoting is unnecessary for -20°C storage

*** 20ul sizes contain 0.1% BSA

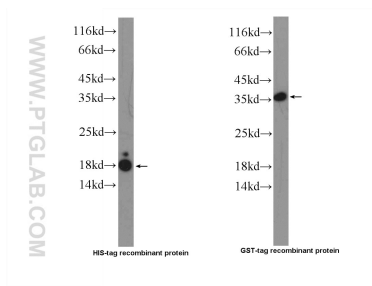
For technical support and original validation data for this product please contact:

T: 1 (888) 4PTGLAB (1-888-478-4522) (toll free in USA), or 1(312) 455-8498 (outside USA)

E: proteintech@ptglab.com
W: ptglab.com

This product is exclusively available under Proteintech Group brand and is not available to purchase from any other manufacturer.

Selected Validation Data



Recombinant protein were subjected to SDS PAGE followed by western blot with 23978-1-AP (GR repeat Antibody) at dilution of 1:1000 incubated at room temperature for 1.5 hours.