

For Research Use Only

ZBTB20 Polyclonal antibody, PBS Only

Catalog Number: 23987-1-PBS

Featured Product



Basic Information

Catalog Number:

23987-1-PBS

Size:

100ug, Concentration: 1 mg/ml by Nanodrop;

Source:

Rabbit

Isotype:

IgG

Immunogen Catalog Number:

AG21140

GenBank Accession Number:

BC029041

GeneID (NCBI):

26137

UNIPROT ID:

Q9HC78

Full Name:

zinc finger and BTB domain containing 20

Calculated MW:

668 aa, 73 kDa

Observed MW:

73 kDa

Purification Method:

Antigen Affinity purified

Applications

Tested Applications:

WB, IHC, IF-P, Indirect ELISA

Species Specificity:

human, mouse, rat

Background Information

Zinc-finger proteins contain DNA-binding domains and have a wide variety of functions, most of which encompass some form of transcriptional activation or repression. ZBTB20 (zinc finger and BTB domain containing 20), also known as HOF, DPZF, ODA-85 or ZNF288, is a 741 amino acid protein that localizes to the nucleus and contains one BTB (POZ) domain and five C2H2-type zinc fingers. Expressed in thymus, spleen, lymph node and fetal liver, ZBTB20 exists as either a monomer or a homodimer that is thought to function as a transcription factor, playing a role in hematopoiesis, oncogenesis and immune responses. Multiple isoforms of ZBTB20 exist due to alternative splicing events.

Storage

Storage:

Store at -80°C.

Storage Buffer:

PBS only, pH7.3

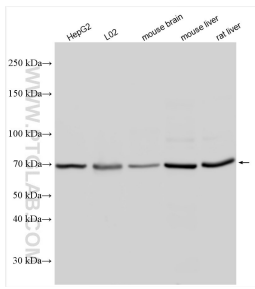
For technical support and original validation data for this product please contact:

T: 1 (888) 4PTGLAB (1-888-478-4522) (toll free in USA), or 1(312) 455-8498 (outside USA)

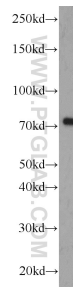
E: proteintech@ptglab.com
W: ptglab.com

This product is exclusively available under Proteintech Group brand and is not available to purchase from any other manufacturer.

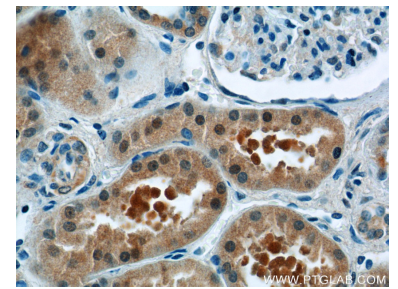
Selected Validation Data



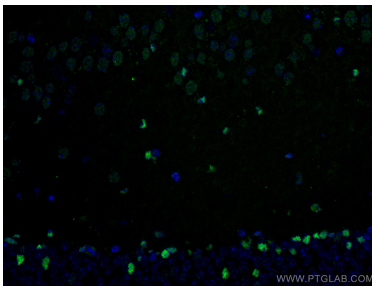
Various lysates were subjected to SDS PAGE followed by western blot with 23987-1-AP (ZBTB20 antibody) at dilution of 1:5000 incubated at room temperature for 1.5 hours. This data was developed using the same antibody clone with 23987-1-PBS in a different storage buffer formulation.



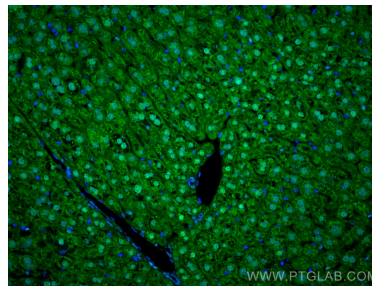
L02 cells were subjected to SDS PAGE followed by western blot with 23987-1-AP (ZBTB20 antibody) at dilution of 1:1000 incubated at room temperature for 1.5 hours. This data was developed using the same antibody clone with 23987-1-PBS in a different storage buffer formulation.



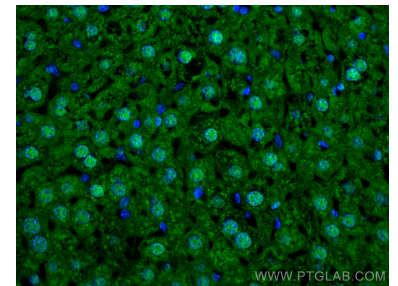
Immunohistochemical analysis of paraffin-embedded human kidney tissue slide using 23987-1-AP (ZBTB20 Antibody) at dilution of 1:50 (under 40x lens). This data was developed using the same antibody clone with 23987-1-PBS in a different storage buffer formulation.



Immunofluorescent analysis of (4% PFA) fixed mouse brain tissue using ZBTB20 antibody (23987-1-AP) at dilution of 1:200 and CoraLite®488-Conjugated AffiniPure Goat Anti-Rabbit IgG(H+L). This data was developed using the same antibody clone with 23987-1-PBS in a different storage buffer formulation.



Immunofluorescent analysis of (4% PFA) fixed paraffin-embedded mouse liver tissue using ZBTB20 antibody (23987-1-AP) at dilution of 1:600 and CoraLite®488-Conjugated Goat Anti-Rabbit IgG(H+L) (SA00013-2). Heat mediated antigen retrieval with Tris-EDTA buffer (pH 9.0). This data was developed using the same antibody clone with 23987-1-PBS in a different storage buffer formulation.



Immunofluorescent analysis of (4% PFA) fixed paraffin-embedded mouse liver tissue using ZBTB20 antibody (23987-1-AP) at dilution of 1:600 and CoraLite®488-Conjugated Goat Anti-Rabbit IgG(H+L) (SA00013-2). Heat mediated antigen retrieval with Tris-EDTA buffer (pH 9.0). This data was developed using the same antibody clone with 23987-1-PBS in a different storage buffer formulation.