

For Research Use Only

CEP89, CCDC123 Polyclonal antibody

Catalog Number: 24002-1-AP

3 Publications



Basic Information

Catalog Number:

24002-1-AP

Size:

150ul, Concentration: 220 ug/ml by Nanodrop and 220 ug/ml by Bradford method using BSA as the standard;

Source:

Rabbit

Isotype:

IgG

Immunogen Catalog Number:

AG21206

GenBank Accession Number:

BC136328

GeneID (NCBI):

84902

UNIPROT ID:

Q965T8

Full Name:

coiled-coil domain containing 123

Calculated MW:

783 aa, 90 kDa

Observed MW:

85-100 kDa, 40 kDa

Purification Method:

Antigen affinity purification

Recommended Dilutions:

WB 1:200-1:1000

IF/ICC 1:50-1:500

Applications

Tested Applications:

WB, IF/ICC, ELISA

Cited Applications:

WB, IF

Species Specificity:

human, mouse

Cited Species:

human, mouse

Positive Controls:

WB : SH-SY5Y cells, Neuro-2a cells

IF/ICC : U-251 cells,

Background Information

CCDC123 (as known as CEP123), also named as CEP89, is a new player in the process of primary ciliogenesis and it also plays a role in mitochondrial metabolism where it may modulate complex IV activity. It has been shown that CEP123 is localized to the distal appendages of the mother centriole and the localization of CEP123 is cell cycle-dependent with its levels decreasing during mitosis. CEP123 depletion can cause defects in ciliary vesicle formation and prevent the formation of a ciliary vesicle at the distal end of the mother centriole. It is possible that CEP123 is involved in regulating the recruitment of membranes to the centrosome through its interaction with Cep290 (PMID:23575228, 23789104, 23348840). 24002-1-AP antibody recognizes all of CEP123 isoforms.

Notable Publications

Author	Pubmed ID	Journal	Application
Pierrick Le Borgne	36070319	PLoS Biol	IF
Min Liu	34480124	Cell Res	WB, IF
Tomoharu Kanie	28625565	Dev Cell	IF

Storage

Storage:

Store at -20°C. Stable for one year after shipment.

Storage Buffer:

PBS with 0.02% sodium azide and 50% glycerol pH 7.3.

Aliquoting is unnecessary for -20°C storage

*** 20ul sizes contain 0.1% BSA

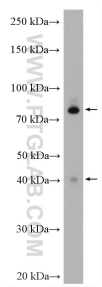
For technical support and original validation data for this product please contact:

T: 1 (888) 4PTGLAB (1-888-478-4522) (toll free in USA), or 1(312) 455-8498 (outside USA)

E: proteintech@ptglab.com
W: ptglab.com

This product is exclusively available under Proteintech Group brand and is not available to purchase from any other manufacturer.

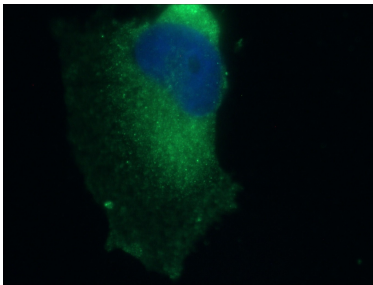
Selected Validation Data



SH-SY5Y cells were subjected to SDS PAGE followed by western blot with 24002-1-AP (CEP89 antibody) at dilution of 1:300 incubated at room temperature for 1.5 hours.



Neuro-2a cells were subjected to SDS PAGE followed by western blot with 24002-1-AP (CEP89 antibody) at dilution of 1:300 incubated at room temperature for 1.5 hours.



Immunofluorescent analysis of (-20°C Ethanol) fixed U-251 cells using 24002-1-AP (CEP89 antibody) at dilution of 1:50 and Alexa Fluor 488-Conjugated Goat Anti-Rabbit IgG(H+L).