

For Research Use Only

GPR108 Polyclonal antibody

Catalog Number: 24009-1-AP

2 Publications



Basic Information

Catalog Number:

24009-1-AP

Size:

150ul, Concentration: 650 ug/ml by Nanodrop and 360 ug/ml by Bradford method using BSA as the standard;

Source:

Rabbit

Isotype:

IgG

Immunogen Catalog Number:

AG20887

GenBank Accession Number:

BC007862

GeneID (NCBI):

56927

UNIPROT ID:

Q9NPR9

Full Name:

G protein-coupled receptor 108

Calculated MW:

61 kDa

Observed MW:

61-70 kDa

Purification Method:

Antigen Affinity purified

Recommended Dilutions:

WB 1:500-1:2000

IHC 1:20-1:200

Applications

Tested Applications:

WB, IHC, ELISA

Cited Applications:

WB, IF

Species Specificity:

human, mouse, rat

Cited Species:

human

Note-IHC: suggested antigen retrieval with TE buffer pH 9.0; (*) Alternatively, antigen retrieval may be performed with citrate buffer pH 6.0

Positive Controls:

WB : mouse kidney tissue, rat kidney tissue

IHC : human kidney tissue, mouse brain tissue

Background Information

GPR108 is a seven-transmembrane family protein that falls in the GPCRs superfamily (PMID:30332431). GPR108 was identified as a highly conserved AAV entry factor implicated in cellular immune responses to AAV (PMID:31784416). Of note is its role in activating nuclear factor kappa-B (NF-κB) signaling, which implied the potential involvement of GPR108 in inflammation-related diseases as well as cancers through dysregulating NF-κB activity (PMID:35659621).

Notable Publications

Author	Pubmed ID	Journal	Application
Xiaohui Zhao	37248411	Nat Chem Biol	WB
Timothy J Smith	37097176	J Virol	WB,IF

Storage

Storage:

Store at -20°C. Stable for one year after shipment.

Storage Buffer:

PBS with 0.02% sodium azide and 50% glycerol pH 7.3.

Aliquoting is unnecessary for -20°C storage

*** 20ul sizes contain 0.1% BSA

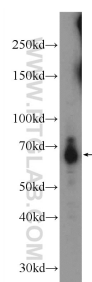
For technical support and original validation data for this product please contact:

T: 1 (888) 4PTGLAB (1-888-478-4522) (toll free in USA), or 1(312) 455-8498 (outside USA)

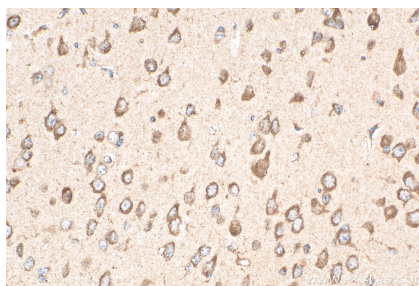
E: proteintech@ptglab.com
W: ptglab.com

This product is exclusively available under Proteintech Group brand and is not available to purchase from any other manufacturer.

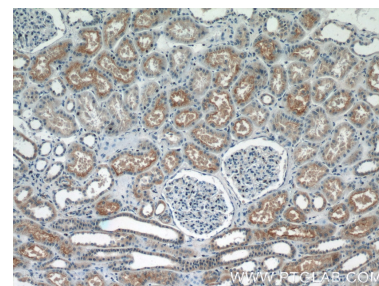
Selected Validation Data



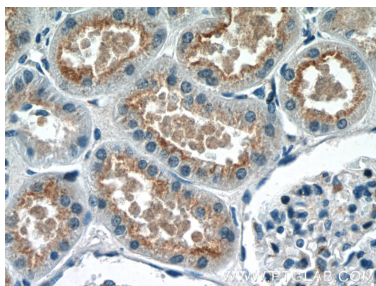
mouse kidney tissue were subjected to SDS PAGE followed by western blot with 24009-1-AP (GPR108 antibody) at dilution of 1:600 incubated at room temperature for 1.5 hours.



Immunohistochemical analysis of paraffin-embedded mouse brain tissue slide using 24009-1-AP (GPR108 antibody) at dilution of 1:200 (under 40x lens). Heat mediated antigen retrieval with Tris-EDTA buffer (pH 9.0).



Immunohistochemical analysis of paraffin-embedded human kidney tissue slide using 24009-1-AP (GPR108 Antibody) at dilution of 1:50 (under 10x lens).



Immunohistochemical analysis of paraffin-embedded human kidney tissue slide using 24009-1-AP (GPR108 Antibody) at dilution of 1:50 (under 40x lens).