

For Research Use Only

# LIN28B Polyclonal antibody

Catalog Number: 24017-1-AP **4 Publications**



## Basic Information

<b>Catalog Number:</b> 24017-1-AP	<b>GenBank Accession Number:</b> BC137526	<b>Purification Method:</b> Antigen affinity purification
<b>Size:</b> 150ul , Concentration: 600 µg/ml by Nanodrop;	<b>GeneID (NCBI):</b> 389421	<b>Recommended Dilutions:</b> WB 1:500-1:3000 IP 0.5-4.0 ug for IP and 1:500-1:1000 for WB
<b>Source:</b> Rabbit	<b>Full Name:</b> lin-28 homolog B (C. elegans)	<b>Calculated MW:</b> 250 aa, 27 kDa
<b>Isotype:</b> IgG	<b>Observed MW:</b> 35 kDa	<b>Immunogen Catalog Number:</b> AG21241

## Applications

<b>Tested Applications:</b> IF, IP, WB, ELISA	<b>Positive Controls:</b> WB : HEK-293 cells, HepG2 cells, K-562 cells
<b>Cited Applications:</b> IF, IHC, IP, PLA, WB	IP : HEK-293 cells,
<b>Species Specificity:</b> human, mouse	IF : NCCIT cells,
<b>Cited Species:</b> human, mouse	

## Background Information

LIN28B, also named as CSDD2, belongs to the lin-28 family. It acts as a suppressor of microRNA (miRNA) biogenesis by specifically binding the precursor let-7 (pre-let-7). LIN28B is specifically expressed in embryonic muscle, neurons, and epithelia, as well as in embryonic carcinoma cells. However, it is suppressed in most adult tissues except for skeletal and cardiac muscle. The calculated molecular weight of LIN28B is 27 kDa, but a 35 kDa band has been detected in some articles (PMID: 33029224, 33378003).

## Notable Publications

Author	Pubmed ID	Journal	Application
Nam-Kyung Yu	34816099	iScience	WB, PLA
Xi Zhao	35148224	Pharm Biol	WB
Qian Hu	25197381	Int J Clin Exp Pathol	IP, IHC

## Storage

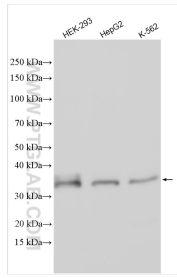
**Storage:**  
Store at -20°C. Stable for one year after shipment.  
**Storage Buffer:**  
PBS with 0.02% sodium azide and 50% glycerol pH 7.3.  
Aliquoting is unnecessary for -20°C storage

\*\*\* 20ul sizes contain 0.1% BSA

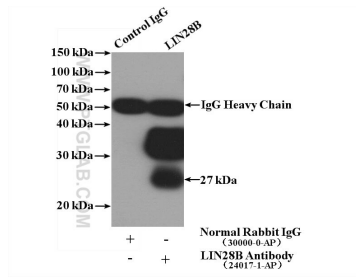
For technical support and original validation data for this product please contact:  
T: 1 (888) 4PTGLAB (1-888-478-4522) (toll free in USA), or 1(312) 455-8498 (outside USA)  
E: proteintech@ptglab.com  
W: ptglab.com

This product is exclusively available under Proteintech Group brand and is not available to purchase from any other manufacturer.

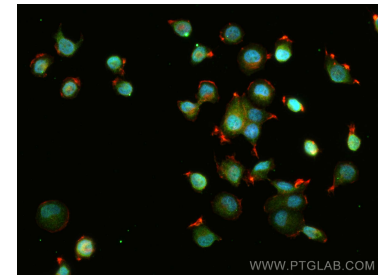
## Selected Validation Data



Various lysates were subjected to SDS PAGE followed by western blot with 24017-1-AP (LIN28B antibody) at dilution of 1:1500 incubated at room temperature for 1.5 hours.



IP Result of anti-LIN28B (IP:24017-1-AP, 4ug; Detection:24017-1-AP 1:500) with HEK-293 cells lysate 1480ug.



Immunofluorescent analysis of (4% PFA) fixed NCCIT cells using LIN28B antibody (24017-1-AP) at dilution of 1:400 and CoraLite@488-Conjugated AffiniPure Goat Anti-Rabbit IgG(H+L), CL594-Phalloidin (red).