

For Research Use Only

ARMC7 Polyclonal antibody

Catalog Number: 24029-1-AP



Basic Information

| | | |
|--|--|--|
| Catalog Number: 24029-1-AP | GenBank Accession Number: BC011728 | Purification Method: Antigen affinity purification |
| Size: 150ul , Concentration: 500 µg/ml by Nanodrop and 160 µg/ml by Bradford method using BSA as the standard; | GeneID (NCBI): 79637 | Recommended Dilutions: IHC 1:20-1:200 IF 1:50-1:500 |
| Source: Rabbit | Full Name: armadillo repeat containing 7 | |
| Isotype: IgG | Calculated MW: 198 aa, 22 kDa | |
| Immunogen Catalog Number: AG21222 | | |

Applications

| | |
|--|---|
| Tested Applications: IF, IHC, ELISA | Positive Controls: |
| Species Specificity: human | IHC : human pancreas tissue, human cervical cancer tissue |
| Note-IHC: suggested antigen retrieval with TE buffer pH 9.0; (*) Alternatively, antigen retrieval may be performed with citrate buffer pH 6.0 | IF : U2OS cells, |

Background Information

Storage

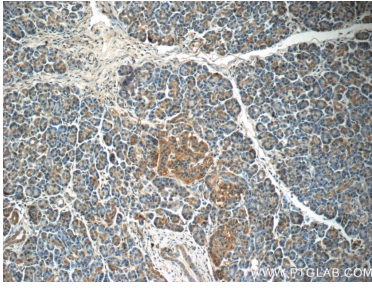
Storage:
Store at -20°C. Stable for one year after shipment.
Storage Buffer:
PBS with 0.02% sodium azide and 50% glycerol pH 7.3.
Aliquoting is unnecessary for -20°C storage

*** 20ul sizes contain 0.1% BSA

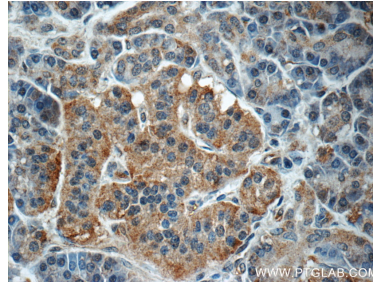
For technical support and original validation data for this product please contact:
T: 1 (888) 4PTGLAB (1-888-478-4522) (toll free in USA), or 1(312) 455-8498 (outside USA) E: proteintech@ptglab.com
W: ptglab.com

This product is exclusively available under Proteintech Group brand and is not available to purchase from any other manufacturer.

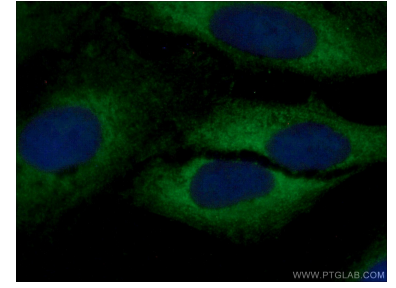
Selected Validation Data



Immunohistochemical analysis of paraffin-embedded human pancreas tissue slide using 24029-1-AP (ARMC7 Antibody) at dilution of 1:50 (under 10x lens).



Immunohistochemical analysis of paraffin-embedded human pancreas tissue slide using 24029-1-AP (ARMC7 Antibody) at dilution of 1:50 (under 40x lens).



Immunofluorescent analysis of (-20°C Ethanol) fixed U2OS cells using 24029-1-AP (ARMC7 antibody) at dilution of 1:50 and Alexa Fluor 488-Conjugated AffiniPure Goat Anti-Rabbit IgG(H+L).