

For Research Use Only

CMC1 Polyclonal antibody

Catalog Number: 24030-1-AP

1 Publications



Basic Information

Catalog Number:

24030-1-AP

Size:

150ul, Concentration: 1500 ug/ml by Nanodrop;

Source:

Rabbit

Isotype:

IgG

Immunogen Catalog Number:

AG21224

GenBank Accession Number:

BC052644

GeneID (NCBI):

152100

UNIPROT ID:

Q7Z7K0

Full Name:

COX assembly mitochondrial protein homolog (S. cerevisiae)

Calculated MW:

106 aa, 12 kDa

Observed MW:

12-15 kDa

Purification Method:

Antigen affinity purification

Recommended Dilutions:

WB 1:2000-1:12000

IP 0.5-4.0 ug for 1.0-3.0 mg of total protein lysate

IHC 1:50-1:500

Applications

Tested Applications:

WB, IP, IHC, ELISA

Cited Applications:

WB

Species Specificity:

human, mouse

Cited Species:

human

Note-IHC: suggested antigen retrieval with TE buffer pH 9.0; (*) Alternatively, antigen retrieval may be performed with citrate buffer pH 6.0

Positive Controls:

WB : K-562 cells, mouse liver tissue

IP : K-562 cells,

IHC : human liver cancer tissue,

Notable Publications

Author	Pubmed ID	Journal	Application
Bixian Luo	36505872	Front Oncol	WB

Storage

Storage:

Store at -20°C. Stable for one year after shipment.

Storage Buffer:

PBS with 0.02% sodium azide and 50% glycerol pH 7.3.

Aliquoting is unnecessary for -20°C storage

*** 20ul sizes contain 0.1% BSA

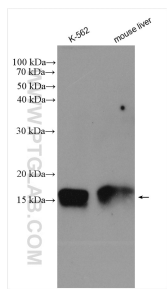
For technical support and original validation data for this product please contact:

T: 1 (888) 4PTGLAB (1-888-478-4522) (toll free in USA), or 1(312) 455-8498 (outside USA)

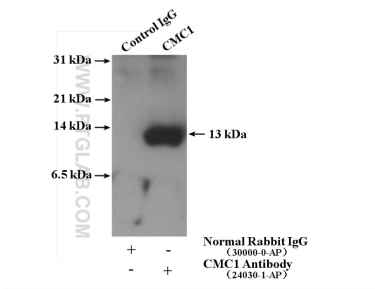
E: proteintech@ptglab.com
W: ptglab.com

This product is exclusively available under Proteintech Group brand and is not available to purchase from any other manufacturer.

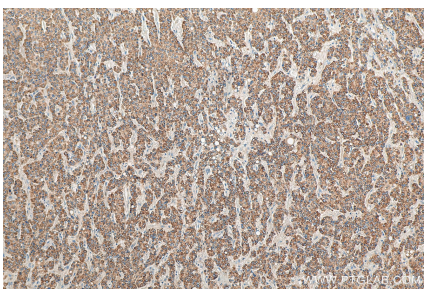
Selected Validation Data



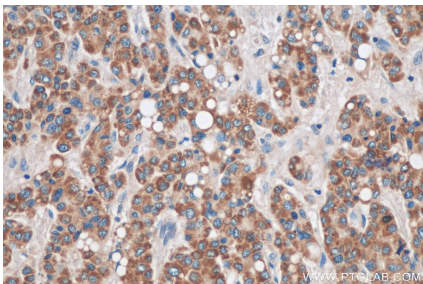
Various lysates were subjected to SDS PAGE followed by western blot with 24030-1-AP (CMC1 antibody) at dilution of 1:6000 incubated at room temperature for 1.5 hours.



IP result of anti-CMC1 (IP:24030-1-AP, 4ug; Detection:24030-1-AP 1:300) with K-562 cells lysate 4000 ug.



Immunohistochemical analysis of paraffin-embedded human liver cancer tissue slide using 24030-1-AP (CMC1 antibody) at dilution of 1:200 (under 10x lens). Heat mediated antigen retrieval with Tris-EDTA buffer (pH 9.0).



Immunohistochemical analysis of paraffin-embedded human liver cancer tissue slide using 24030-1-AP (CMC1 antibody) at dilution of 1:200 (under 40x lens). Heat mediated antigen retrieval with Tris-EDTA buffer (pH 9.0).