

For Research Use Only

# ASB5 Polyclonal antibody

Catalog Number: 24031-1-AP



## Basic Information

**Catalog Number:**

24031-1-AP

**Size:**

150ul, Concentration: 153 ug/ml by Nanodrop and 153 ug/ml by Bradford method using BSA as the standard;

**Source:**

Rabbit

**Isotype:**

IgG

**Immunogen Catalog Number:**

AG21230

**GenBank Accession Number:**

BC065710

**GeneID (NCBI):**

140458

**UNIPROT ID:**

Q8WWX0

**Full Name:**

ankyrin repeat and SOCS box-containing 5

**Calculated MW:**

329 aa, 36 kDa

**Observed MW:**

36-40 kDa

**Purification Method:**

Antigen affinity purification

**Recommended Dilutions:**

WB 1:1000-1:4000

IF/ICC 1:50-1:500

## Applications

**Tested Applications:**

WB, IF/ICC, ELISA

**Species Specificity:**

human, mouse, rat

**Positive Controls:**

WB : mouse skeletal muscle tissue, mouse heart tissue, rat skeletal muscle tissue

IF/ICC : HepG2 cells,

## Background Information

ASB5, also named as Ankyrin repeat and SOCS box-containing 5, is a 329 amino acid protein, which contains a conserved one C-terminal SOCS box motif. Asb5 was significantly upregulated in growing collateral arteries on mRNA and protein level. It has been shown that asb5 is a protein implicated in the initiation of arteriogenesis.

## Storage

**Storage:**

Store at -20°C. Stable for one year after shipment.

**Storage Buffer:**

PBS with 0.02% sodium azide and 50% glycerol pH 7.3.

Aliquoting is unnecessary for -20°C storage

\*\*\* 20ul sizes contain 0.1% BSA

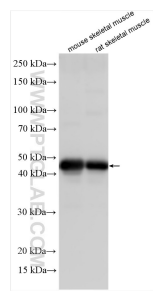
For technical support and original validation data for this product please contact:

T: 1 (888) 4PTGLAB (1-888-478-4522) (toll free in USA), or 1(312) 455-8498 (outside USA)

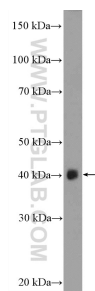
E: [proteintech@ptglab.com](mailto:proteintech@ptglab.com)  
W: [ptglab.com](http://ptglab.com)

This product is exclusively available under Proteintech Group brand and is not available to purchase from any other manufacturer.

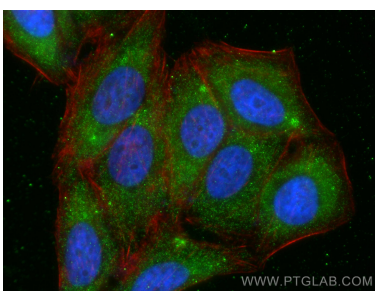
## Selected Validation Data



Various lysates were subjected to SDS PAGE followed by western blot with 24031-1-AP (ASB5 antibody) at dilution of 1:2000 incubated at room temperature for 1.5 hours.



mouse skeletal muscle tissue were subjected to SDS PAGE followed by western blot with 24031-1-AP (ASB5 Antibody) at dilution of 1:300 incubated at room temperature for 1.5 hours.



Immunofluorescent analysis of (-20°C Ethanol) fixed HepG2 cells using ASB5 antibody (24031-1-AP) at dilution of 1:200 and CoraLite@488-Conjugated Goat Anti-Rabbit IgG(H+L), CL594-Phalloidin (red).