

For Research Use Only

# CFHR2 Polyclonal antibody

Catalog Number: 24048-1-AP



## Basic Information

**Catalog Number:**

24048-1-AP

**Size:**

150ul , Concentration: 600 ug/ml by Nanodrop;

**Source:**

Rabbit

**Isotype:**

IgG

**Immunogen Catalog Number:**

AG21106

**GenBank Accession Number:**

BC022283

**GeneID (NCBI):**

3080

**UNIPROT ID:**

P36980

**Full Name:**

complement factor H-related 2

**Calculated MW:**

270 aa, 31 kDa

**Observed MW:**

30 kDa

**Purification Method:**

Antigen Affinity purified

**Recommended Dilutions:**

WB: 1:1000-1:6000

IP: 0.5-4.0 ug for 1.0-3.0 mg of total protein lysate

## Applications

**Tested Applications:**

WB, IP, ELISA

**Species Specificity:**

human

**Positive Controls:**

WB : HuH-7 cells,

IP : HepG2 cells,

## Background Information

Complement factor H-related protein 2 (CFHR2) is a human immune-related recombinant protein and a member of the family that assists in the activation of the complement system. This protein originates from the filtration membrane of the glomerulus and the lymphatic system, and plays an important role in immune regulation and inflammation suppression.

## Storage

**Storage:**

Store at -20°C. Stable for one year after shipment.

**Storage Buffer:**

PBS with 0.02% sodium azide and 50% glycerol, pH7.3

Aliquoting is unnecessary for -20°C storage

**\*\*\* 20ul sizes contain 0.1% BSA**

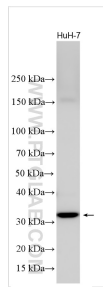
For technical support and original validation data for this product please contact:

T: 1 (888) 4PTGLAB (1-888-478-4522) (toll free in USA), or 1(312) 455-8498 (outside USA)

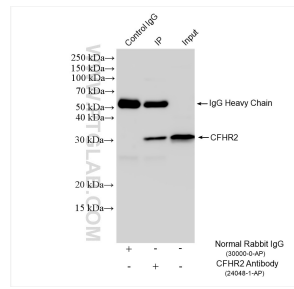
E: [proteintech@ptglab.com](mailto:proteintech@ptglab.com)  
W: [ptglab.com](http://ptglab.com)

**This product is exclusively available under Proteintech Group brand and is not available to purchase from any other manufacturer.**

## Selected Validation Data



HuH-7 cells were subjected to SDS PAGE followed by western blot with 24048-1-AP (CFHR2 antibody) at dilution of 1:3000 incubated at room temperature for 1.5 hours.



IP result of anti-CFHR2 (IP:24048-1-AP, 4ug; Detection:24048-1-AP 1:1000) with HepG2 cells lysate 1800 ug.