

For Research Use Only

# CFHR2 Polyclonal antibody, PBS Only

Catalog Number: 24048-1-PBS



## Basic Information

<b>Catalog Number:</b> 24048-1-PBS	<b>GenBank Accession Number:</b> BC022283	<b>Purification Method:</b> Antigen Affinity purified
<b>Size:</b> 100ug , Concentration: 1 mg/ml by Nanodrop;	<b>GeneID (NCBI):</b> 3080	
<b>Source:</b> Rabbit	<b>UNIPROT ID:</b> P36980	
<b>Isotype:</b> IgG	<b>Full Name:</b> complement factor H-related 2	
<b>Immunogen Catalog Number:</b> AG21106	<b>Calculated MW:</b> 270 aa, 31 kDa	
	<b>Observed MW:</b> 30 kDa	

## Applications

**Tested Applications:**  
WB, IP, Indirect ELISA

**Species Specificity:**  
human

## Background Information

Complement factor H-related protein 2 (CFHR2) is a human immune-related recombinant protein and a member of the family that assists in the activation of the complement system. This protein originates from the filtration membrane of the glomerulus and the lymphatic system, and plays an important role in immune regulation and inflammation suppression.

## Storage

**Storage:**  
Store at -80°C.

**Storage Buffer:**  
PBS only, pH7.3

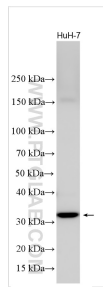
For technical support and original validation data for this product please contact:

T: 1 (888) 4PTGLAB (1-888-478-4522) (toll free  
in USA), or 1(312) 455-8498 (outside USA)

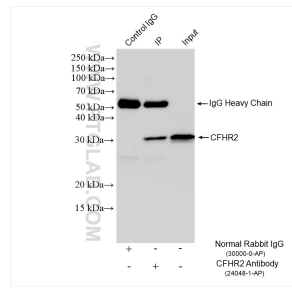
E: [proteintech@ptglab.com](mailto:proteintech@ptglab.com)  
W: [ptglab.com](http://ptglab.com)

**This product is exclusively available under Proteintech Group brand and is not available to purchase from any other manufacturer.**

## Selected Validation Data



HuH-7 cells were subjected to SDS PAGE followed by western blot with 24048-1-AP (CFHR2 antibody) at dilution of 1:3000 incubated at room temperature for 1.5 hours. This data was developed using the same antibody clone with 24048-1-PBS in a different storage buffer formulation.



IP result of anti-CFHR2 (IP:24048-1-AP, 4ug; Detection:24048-1-AP 1:1000) with HepG2 cells lysate 1800 ug. This data was developed using the same antibody clone with 24048-1-PBS in a different storage buffer formulation.