

For Research Use Only

SGF29 Polyclonal antibody

Catalog Number: 24061-1-AP

Featured Product

1 Publications



Basic Information

Catalog Number: 24061-1-AP	GenBank Accession Number: BC011981	Purification Method: Antigen Affinity purified
Size: 150ul , Concentration: 1000 µg/ml by Nanodrop and 647 µg/ml by Bradford method using BSA as the standard;	GeneID (NCBI): 112869	Recommended Dilutions: WB 1:500-1:2000 IHC 1:50-1:800
Source: Rabbit	Full Name: coiled-coil domain containing 101	
Isotype: IgG	Calculated MW: 293 aa, 33 kDa	
Immunogen Catalog Number: AG21261	Observed MW: 33 kDa	

Applications

Tested Applications: IHC, WB, ELISA	Positive Controls: WB : HeLa cells, MDA-MB-453s cells
Cited Applications: WB	IHC : human liver cancer tissue, human cervical cancer tissue
Species Specificity: human	
Cited Species: human	

Note-IHC: suggested antigen retrieval with TE buffer pH 9.0; (*) Alternatively, antigen retrieval may be performed with citrate buffer pH 6.0

Background Information

SAGA-associated factor 29 (SGF29) is a chromatin reader component of some histone acetyltransferase (HAT) SAGA-type complexes. SGF29 specifically recognizes and binds methylated 'Lys-4' of histone H3 (H3K4me), with a preference for trimethylated form (H3K4me3) (PMID:19103755, PMID:26421618, PMID:21685874, PMID:26578293). Involved in the response to the endoplasmic reticulum (ER) stress by recruiting the SAGA complex to H3K4me, thereby promoting histone H3 acetylation and cell survival (PubMed:23894581). It has a calculated molecular weight of 33 kDa.

Notable Publications

Author	Pubmed ID	Journal	Application
Lingyun Long	34795452	Nature	WB

Storage

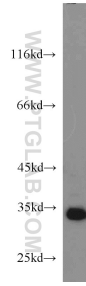
Storage:
Store at -20°C. Stable for one year after shipment.
Storage Buffer:
PBS with 0.02% sodium azide and 50% glycerol pH 7.3.
Aliquoting is unnecessary for -20°C storage

*** 20ul sizes contain 0.1% BSA

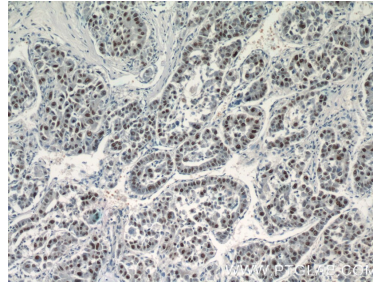
For technical support and original validation data for this product please contact:
T: 1 (888) 4PTGLAB (1-888-478-4522) (toll free in USA), or 1(312) 455-8498 (outside USA)
E: proteintech@ptglab.com
W: ptglab.com

This product is exclusively available under Proteintech Group brand and is not available to purchase from any other manufacturer.

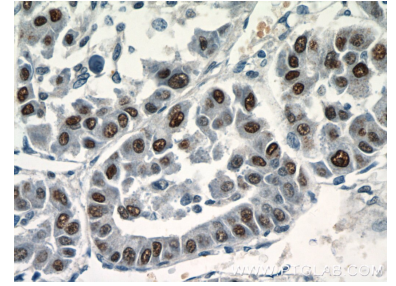
Selected Validation Data



HeLa cells were subjected to SDS PAGE followed by western blot with 24061-1-AP (SGF29 antibody) at dilution of 1:1000 incubated at room temperature for 1.5 hours.



Immunohistochemical analysis of paraffin-embedded human liver cancer tissue slide using 24061-1-AP (SGF29 antibody at dilution of 1:400 (under 10x lens).



Immunohistochemical analysis of paraffin-embedded human liver cancer tissue slide using 24061-1-AP (SGF29 antibody at dilution of 1:400 (under 40x lens).