

For Research Use Only

SLC36A4 Polyclonal antibody

Catalog Number: 24066-1-AP



Basic Information

Catalog Number:

24066-1-AP

Size:

150ul, Concentration: 200 ug/ml by Nanodrop and 180 ug/ml by Bradford method using BSA as the standard;

Source:

Rabbit

Isotype:

IgG

Immunogen Catalog Number:

AG21142

GenBank Accession Number:

BC047374

GeneID (NCBI):

120103

UNIPROT ID:

Q6YBV0

Full Name:

solute carrier family 36 (proton/amino acid symporter), member 4

Calculated MW:

504 aa, 56 kDa

Observed MW:

41-66 kDa

Purification Method:

Antigen Affinity purified

Recommended Dilutions:

WB 1:500-1:2000

Applications

Tested Applications:

WB, ELISA

Species Specificity:

human

Positive Controls:

WB : A549 cells, HEK-293 cells, PC-3 cells

Background Information

SLC36A4 (also known as proton-coupled amino-acid transporter 4, PAT4), is a member of the solute carrier (SLC) 36 family which functions as transporter for amino acids and derivatives. SLC36A4 is widely distributed at the mRNA level in normal tissues and many cancer cell lines. It modulates the mTORC1 signaling and is essential for the proliferation of cancer cells. In addition, small GTPase Rab12 controls the degradation of SLC36A4, which indirectly modulates mTORC1 activity and autophagy. This antibody can recognize the endogenous SLC36A4 protein in multiple cell lines.

Storage

Storage:

Store at -20°C. Stable for one year after shipment.

Storage Buffer:

PBS with 0.02% sodium azide and 50% glycerol pH 7.3.

Aliquoting is unnecessary for -20°C storage

*** 20ul sizes contain 0.1% BSA

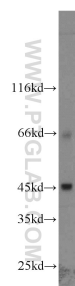
For technical support and original validation data for this product please contact:

T: 1 (888) 4PTGLAB (1-888-478-4522) (toll free in USA), or 1(312) 455-8498 (outside USA)

E: proteintech@ptglab.com
W: ptglab.com

This product is exclusively available under Proteintech Group brand and is not available to purchase from any other manufacturer.

Selected Validation Data



A549 cells were subjected to SDS PAGE followed by western blot with 24066-1-AP (SLC36A4 antibody) at dilution of 1:1000 incubated at room temperature for 1.5 hours.