

For Research Use Only

# SLC36A4 Polyclonal antibody, PBS Only

Catalog Number: 24066-1-PBS



## Basic Information

**Catalog Number:**

24066-1-PBS

**Size:**

100ug, Concentration: 1 mg/ml by Nanodrop;

**Source:**

Rabbit

**Isotype:**

IgG

**Immunogen Catalog Number:**

AG21142

**GenBank Accession Number:**

BC047374

**GeneID (NCBI):**

120103

**UNIPROT ID:**

Q6YBV0

**Full Name:**

solute carrier family 36 (proton/amino acid symporter), member 4

**Calculated MW:**

504 aa, 56 kDa

**Observed MW:**

41-66 kDa

**Purification Method:**

Antigen Affinity purified

## Applications

**Tested Applications:**

WB, Indirect ELISA

**Species Specificity:**

human

## Background Information

SLC36A4 (also known as proton-coupled amino-acid transporter 4, PAT4), is a member of the solute carrier (SLC) 36 family which functions as transporter for amino acids and derivatives. SLC36A4 is widely distributed at the mRNA level in normal tissues and many cancer cell lines. It modulates the mTORC1 signaling and is essential for the proliferation of cancer cells. In addition, small GTPase Rab12 controls the degradation of SLC36A4, which indirectly modulates mTORC1 activity and autophagy. This antibody can recognize the endogenous SLC36A4 protein in multiple cell lines.

## Storage

**Storage:**

Store at -80°C.

**Storage Buffer:**

PBS only, pH7.3

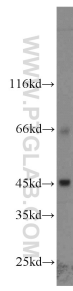
For technical support and original validation data for this product please contact:

T: 1 (888) 4PTGLAB (1-888-478-4522) (toll free in USA), or 1(312) 455-8498 (outside USA)

E: [proteintech@ptglab.com](mailto:proteintech@ptglab.com)  
W: [ptglab.com](http://ptglab.com)

**This product is exclusively available under Proteintech Group brand and is not available to purchase from any other manufacturer.**

## Selected Validation Data



A549 cells were subjected to SDS PAGE followed by western blot with 24066-1-AP (SLC36A4 antibody) at dilution of 1:1000 incubated at room temperature for 1.5 hours. This data was developed using the same antibody clone with 24066-1-PBS in a different storage buffer formulation.