

For Research Use Only

CEP120 Polyclonal antibody

Catalog Number: 24067-1-AP



Basic Information

Catalog Number: 24067-1-AP	GenBank Accession Number: BC040527	Purification Method: Antigen affinity purification
Size: 150ul , Concentration: 600 ug/ml by Nanodrop;	GeneID (NCBI): 153241	Recommended Dilutions: WB 1:1000-1:6000
Source: Rabbit	UNIPROT ID: Q8N960	IHC 1:50-1:500
Isotype: IgG	Full Name: centrosomal protein 120kDa	IF/ICC 1:50-1:500
Immunogen Catalog Number: AG21165	Calculated MW: 986 aa, 113 kDa	
	Observed MW: 120-130 kDa	

Applications

Tested Applications: WB, IHC, IF/ICC, ELISA	Positive Controls:
Species Specificity: human, mouse	WB : Jurkat cells, mouse lung tissue
Note-IHC: suggested antigen retrieval with TE buffer pH 9.0; (*) Alternatively, antigen retrieval may be performed with citrate buffer pH 6.0	IHC : human pancreas tissue,
	IF/ICC : HeLa cells,

Background Information

CEP120 encodes a protein that functions in the microtubule-dependent coupling of the nucleus and the centrosome. It is involved in regulating centrosome-mediated interkinetic nuclear migration of neural progenitors (PMID: 27185865, 23857771). CEP120, SPICE1, and CPAP are required for centriole elongation and for the recruitment of distal microtubule-capping proteins and CEP135 to procentrioles (PMID: 23810536). Cep120 and Taccs are required for the neural progenitor pool during mouse neocortical development (PMID: 17920017).

Storage

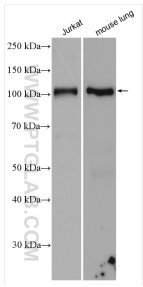
Storage:
Store at -20°C. Stable for one year after shipment.
Storage Buffer:
PBS with 0.02% sodium azide and 50% glycerol pH 7.3.
Aliquoting is unnecessary for -20°C storage

*** 20ul sizes contain 0.1% BSA

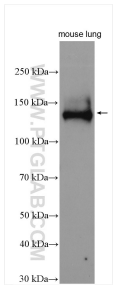
For technical support and original validation data for this product please contact:
T: 1 (888) 4PTGLAB (1-888-478-4522) (toll free in USA), or 1(312) 455-8498 (outside USA)
E: proteintech@ptglab.com
W: ptglab.com

This product is exclusively available under Proteintech Group brand and is not available to purchase from any other manufacturer.

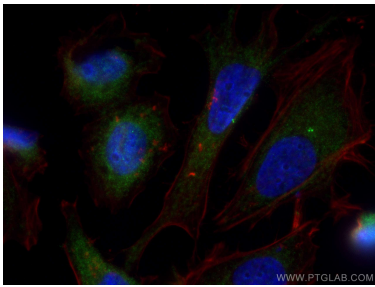
Selected Validation Data



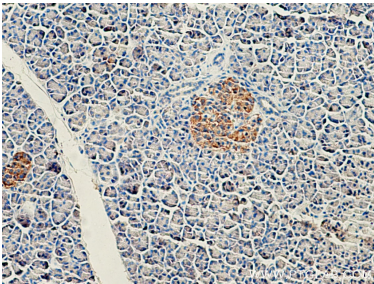
Various lysates were subjected to SDS PAGE followed by western blot with 24067-1-AP (CEP120 antibody) at dilution of 1:3000 incubated at room temperature for 1.5 hours.



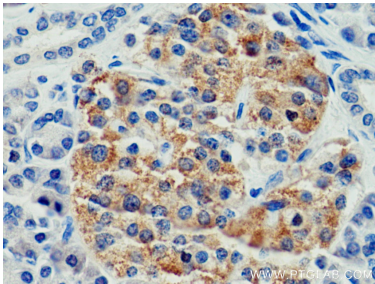
mouse lung tissue were subjected to SDS PAGE followed by western blot with 24067-1-AP (CEP120 antibody) at dilution of 1:1000 incubated at room temperature for 1.5 hours.



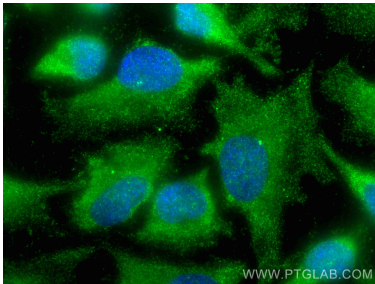
Immunofluorescent analysis of (-20°C Methanol) fixed HeLa cells using CEP120 antibody (24067-1-AP) at dilution of 1:200 and CoraLite@488-Conjugated AffiniPure Goat Anti-Rabbit IgG(H+L), CoraLite@594 Beta Actin antibody (CL594-66009, Clone: 2D4H5, red).



Immunohistochemical analysis of paraffin-embedded human pancreas tissue slide using 24067-1-AP (CEP120 antibody) at dilution of 1:200 (under 10x lens). Heat mediated antigen retrieval with Tris-EDTA buffer (pH 9.0).



Immunohistochemical analysis of paraffin-embedded human pancreas tissue slide using 24067-1-AP (CEP120 antibody) at dilution of 1:200 (under 40x lens). Heat mediated antigen retrieval with Tris-EDTA buffer (pH 9.0).



Immunofluorescent analysis of (-20°C Methanol) fixed HeLa cells using CEP120 antibody (24067-1-AP) at dilution of 1:200 and CoraLite@488-Conjugated AffiniPure Goat Anti-Rabbit IgG(H+L).