

For Research Use Only

ANKLE1 Polyclonal antibody

Catalog Number: 24080-1-AP

1 Publications



Basic Information

| | | |
|--|---|---|
| Catalog Number: 24080-1-AP | GenBank Accession Number: BC125274 | Purification Method: Antigen Affinity purified |
| Size: 150ul , Concentration: 500 µg/ml by Nanodrop and 273 µg/ml by Bradford method using BSA as the standard; | GeneID (NCBI): 126549 | Recommended Dilutions: WB 1:500-1:1000 IHC 1:20-1:200 IF 1:50-1:500 |
| Source: Rabbit | Full Name: ankyrin repeat and LEM domain containing 1 | |
| Isotype: IgG | Calculated MW: 615 aa, 67 kDa | |
| Immunogen Catalog Number: AG21253 | Observed MW: 67 kDa | |

Applications

| | |
|---|---|
| Tested Applications: IF, IHC, WB, ELISA | Positive Controls: WB : HeLa cells, K-562 cells |
| Cited Applications: IHC, WB | IHC : human breast cancer tissue, |
| Species Specificity: human | IF : HeLa cells, |
| Cited Species: human | |
| Note-IHC: suggested antigen retrieval with TE buffer pH 9.0; (*) Alternatively, antigen retrieval may be performed with citrate buffer pH 6.0 | |

Background Information

Notable Publications

| Author | Pubmed ID | Journal | Application |
|-------------|-----------|--------------------|-------------|
| Tianzhen He | 35650630 | World J Surg Oncol | WB, IHC |

Storage

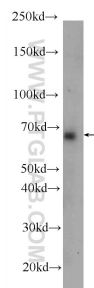
Storage:
Store at -20°C. Stable for one year after shipment.
Storage Buffer:
PBS with 0.02% sodium azide and 50% glycerol pH 7.3.
Aliquoting is unnecessary for -20°C storage

*** 20ul sizes contain 0.1% BSA

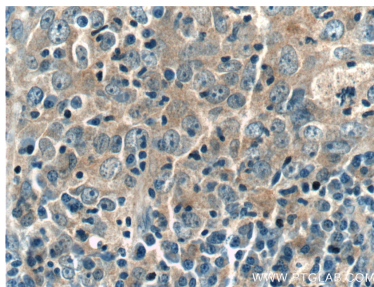
For technical support and original validation data for this product please contact:
T: 1 (888) 4PTGLAB (1-888-478-4522) (toll free in USA), or 1(312) 455-8498 (outside USA)
E: proteintech@ptglab.com
W: ptglab.com

This product is exclusively available under Proteintech Group brand and is not available to purchase from any other manufacturer.

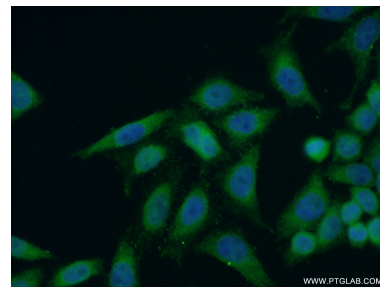
Selected Validation Data



HeLa cells were subjected to SDS PAGE followed by western blot with 24080-1-AP (ANKLE1 Antibody) at dilution of 1:500 incubated at room temperature for 1.5 hours.



Immunohistochemical analysis of paraffin-embedded human breast cancer tissue slide using 24080-1-AP (ANKLE1 Antibody) at dilution of 1:50 (under 40x Lens).



Immunofluorescent analysis of (-20°C Ethanol) fixed HeLa cells using 24080-1-AP (ANKLE1 antibody) at dilution of 1:50 and Alexa Fluor 488-conjugated AffiniPure Goat Anti-Rabbit IgG(H+L).