

For Research Use Only

FRYL Polyclonal antibody, PBS Only

Catalog Number: 24085-1-PBS



Basic Information

Catalog Number:

24085-1-PBS

Size:

100ug, Concentration: 1 mg/ml by Nanodrop;

Source:

Rabbit

Isotype:

IgG

Immunogen Catalog Number:

AG21333

GenBank Accession Number:

BC021803

GeneID (NCBI):

285527

UNIPROT ID:

O94915

Full Name:

FRY-like

Calculated MW:

3013 aa, 340 kDa

Observed MW:

340 kDa

Purification Method:

Antigen Affinity purified

Applications

Tested Applications:

WB, Indirect ELISA

Species Specificity:

human, mouse

Background Information

FRYL, or FRY-like transcription coactivator, is a protein that belongs to the Furry protein family, which is evolutionarily conserved from yeast to humans. FRYL has almost identical functional domains to the well-characterized Fry protein, which is involved in many processes, including cell polarization, regulation of the actin cytoskeleton, and patterning of sensory neuron dendritic fields (PMID: 34386489). FRYL is a prognostic marker in certain cancers, including Kidney renal clear cell carcinoma, Ovary serous cystadenocarcinoma, and Rectum adenocarcinoma, suggesting its potential role in cancer progression.

Storage

Storage:

Store at -80°C.

Storage Buffer:

PBS Only

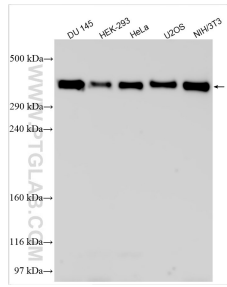
For technical support and original validation data for this product please contact:

T: 1 (888) 4PTGLAB (1-888-478-4522) (toll free in USA), or 1(312) 455-8498 (outside USA)

E: proteintech@ptglab.com
W: ptglab.com

This product is exclusively available under Proteintech Group brand and is not available to purchase from any other manufacturer.

Selected Validation Data



Various lysates were subjected to SDS PAGE followed by western blot with 24085-1-AP (FRYL antibody) at dilution of 1:1000 incubated at room temperature for 1.5 hours. This data was developed using the same antibody clone with 24085-1-PBS in a different storage buffer formulation.