

For Research Use Only

# SPRED2 Polyclonal antibody

Catalog Number: 24091-1-AP

Featured Product

4 Publications



## Basic Information

<b>Catalog Number:</b> 24091-1-AP	<b>GenBank Accession Number:</b> BC136334	<b>Purification Method:</b> Antigen Affinity purified
<b>Size:</b> 150ul, Concentration: 350 µg/ml by Nanodrop and 133 µg/ml by Bradford method using BSA as the standard;	<b>GeneID (NCBI):</b> 200734	<b>Recommended Dilutions:</b> WB 1:1000-1:6000 IHC 1:50-1:500 IF 1:50-1:500
<b>Source:</b> Rabbit	<b>Full Name:</b> sprouty-related, EVH1 domain containing 2	
<b>Isotype:</b> IgG	<b>Calculated MW:</b> 418 aa, 48 kDa	
<b>Immunogen Catalog Number:</b> AG21359	<b>Observed MW:</b> 40-48 kDa	

## Applications

### Tested Applications:

IF, IHC, WB, ELISA

### Cited Applications:

IF, IHC, WB

### Species Specificity:

human, mouse, rat

### Cited Species:

human, mouse

**Note-IHC: suggested antigen retrieval with TE buffer pH 9.0; (\*) Alternatively, antigen retrieval may be performed with citrate buffer pH 6.0**

### Positive Controls:

**WB:** PC-12 cells, MCF-7 cells, mouse testis tissue, mouse brain tissue, rat brain tissue, T-47D cells, rat testis tissue

**IHC:** rat testis tissue, human testis tissue

**IF:** HeLa cells,

## Background Information

SPRED2 is a member of the SPRED family of proteins that modulate GFR signaling by inhibiting the Ras-MAPK cascade (PMID: 17094949). SPRED family members are characterized by an N-terminal Enabled/VASP homology 1 domain (EVH1), a central c-Kit binding domain (KBD) and a C-terminal Sprouty-related domain (SPR) (PMID: 17691106). Three mammalian SPREDs (SPRED1-3) have been described. In adult tissues, SPRED2 is expressed ubiquitously, but most highly expressed in glandular epithelia (PMID: 15580519; 17691106). Reduced expression level of SPRED2 has been reported in human hepatocellular carcinoma (HCC), suggesting SPRED2 may play a role in tumorigenesis (PMID: 16652141). Gene disruption of SPRED2 causes dwarfism (PMID: 15946934).

## Notable Publications

Author	Pubmed ID	Journal	Application
Shinsuke Oda	34818323	PLoS One	IHC
Hiroyasu Sakai	35908904	Biol Pharm Bull	WB
Tong Gao	36902429	Int J Mol Sci	WB

## Storage

### Storage:

Store at -20°C. Stable for one year after shipment.

### Storage Buffer:

PBS with 0.02% sodium azide and 50% glycerol pH 7.3.

Aliquoting is unnecessary for -20°C storage

\*\*\* 20ul sizes contain 0.1% BSA

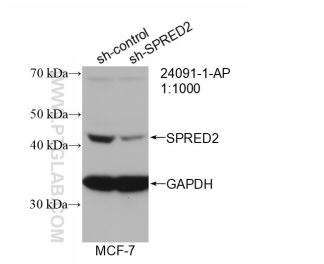
For technical support and original validation data for this product please contact:

T: 1 (888) 4PTGLAB (1-888-478-4522) (toll free in USA), or 1(312) 455-8498 (outside USA)

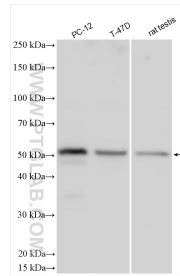
E: proteintech@ptglab.com  
W: ptglab.com

This product is exclusively available under Proteintech Group brand and is not available to purchase from any other manufacturer.

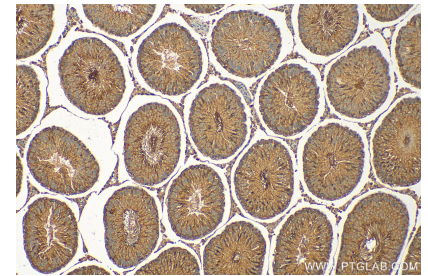
## Selected Validation Data



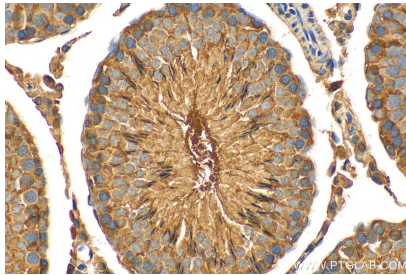
WB result of SPRED2 antibody (24091-1-AP; 1:1000; incubated at room temperature for 1.5 hours) with sh-Control and sh-SPRED2 transfected MCF-7 cells.



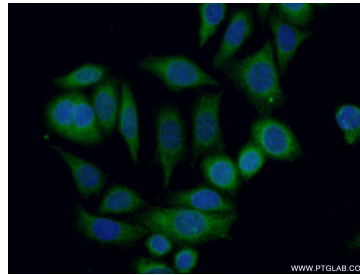
Various lysates were subjected to SDS PAGE followed by western blot with 24091-1-AP (SPRED2 antibody) at dilution of 1:3000 incubated at room temperature for 1.5 hours.



Immunohistochemical analysis of paraffin-embedded rat testis tissue slide using 24091-1-AP (SPRED2 antibody) at dilution of 1:200 (under 10x lens). Heat mediated antigen retrieval with Tris-EDTA buffer (pH 9.0).



Immunohistochemical analysis of paraffin-embedded rat testis tissue slide using 24091-1-AP (SPRED2 antibody) at dilution of 1:200 (under 40x lens). Heat mediated antigen retrieval with Tris-EDTA buffer (pH 9.0).



Immunofluorescent analysis of (-20°C Ethanol) fixed HeLa cells using 24091-1-AP (SPRED2 antibody) at dilution of 1:50 and Alexa Fluor 488-conjugated AffiniPure Goat Anti-Rabbit IgG(H+L).