

For Research Use Only

HACE1 Polyclonal antibody

Catalog Number: 24104-1-AP

Featured Product

4 Publications



Basic Information

Catalog Number:

24104-1-AP

Size:

150ul, Concentration: 800 ug/ml by Nanodrop and 433 ug/ml by Bradford method using BSA as the standard;

Source:

Rabbit

Isotype:

IgG

Immunogen Catalog Number:

AG21130

GenBank Accession Number:

BC034982

GeneID (NCBI):

57531

UNIPROT ID:

Q8IYU2

Full Name:

HECT domain and ankyrin repeat containing, E3 ubiquitin protein ligase 1

Calculated MW:

909 aa, 102 kDa

Observed MW:

78 kDa

Purification Method:

Antigen affinity purification

Recommended Dilutions:

WB 1:500-1:1000

IHC 1:100-1:400

IF/ICC 1:20-1:200

Applications

Tested Applications:

WB, IHC, IF/ICC, ELISA

Cited Applications:

WB, IHC

Species Specificity:

human

Cited Species:

human, mouse

Positive Controls:

WB : HEK-293 cells, HeLa cells

IHC : human heart tissue,

IF/ICC : HeLa cells,

Note-IHC: suggested antigen retrieval with TE buffer pH 9.0; (*) Alternatively, antigen retrieval may be performed with citrate buffer pH 6.0

Background Information

HACE1(E3 ubiquitin-protein ligase HACE1) also named as KIAA1320, has a tumor-suppressor function dependent on its E3 ligase activity and controlling cell cycle progression during cell stress through degradation of cyclin D1. It belongs to the HECT family of E3 ubiquitin protein ligase. This protein has 4 isoforms produced by alternative splicing with the molecular weight of 102 kDa, 36 kDa, 64 kDa and 78 kDa.

Notable Publications

Author	Pubmed ID	Journal	Application
Ying-Ling Chen	29673126	Cancer Med	IHC
Siyang Xiang	38881936	Transl Cancer Res	IHC
Kenan Huang	38660717	Acta Biochim Biophys Sin (Shanghai)	WB

Storage

Storage:

Store at -20°C. Stable for one year after shipment.

Storage Buffer:

PBS with 0.02% sodium azide and 50% glycerol pH 7.3.

Aliquoting is unnecessary for -20°C storage

*** 20ul sizes contain 0.1% BSA

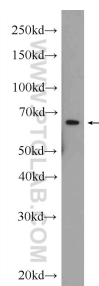
For technical support and original validation data for this product please contact:

T: 1 (888) 4PTGLAB (1-888-478-4522) (toll free in USA), or 1(312) 455-8498 (outside USA)

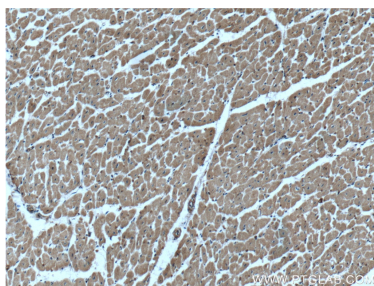
E: proteintech@ptglab.com
W: ptglab.com

This product is exclusively available under Proteintech Group brand and is not available to purchase from any other manufacturer.

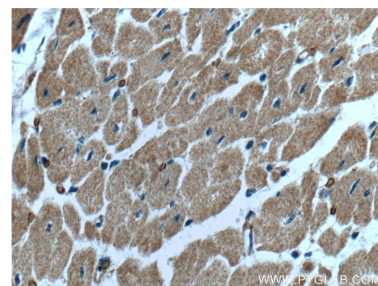
Selected Validation Data



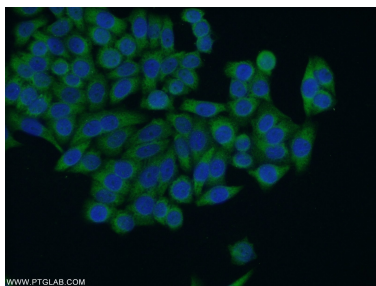
HEK-293 cells were subjected to SDS PAGE followed by western blot with 24104-1-AP (HACE1 Antibody) at dilution of 1:600 incubated at room temperature for 1.5 hours.



Immunohistochemical analysis of paraffin-embedded human heart tissue slide using 24104-1-AP (HACE1 Antibody) at dilution of 1:200 (under 10x lens).



Immunohistochemical analysis of paraffin-embedded human heart tissue slide using 24104-1-AP (HACE1 Antibody) at dilution of 1:200 (under 40x lens).



Immunofluorescent analysis of HeLa cells using 24104-1-AP (HACE1 antibody) at dilution of 1:50 and Alexa Fluor 488-conjugated Goat Anti-Rabbit IgG(H+L).