

For Research Use Only

# CD2AP Polyclonal antibody

Catalog Number: 24122-1-AP

3 Publications



## Basic Information

### Catalog Number:

24122-1-AP

### Size:

150ul, Concentration: 650 ug/ml by Nanodrop and 333 ug/ml by Bradford method using BSA as the standard;

### Source:

Rabbit

### Isotype:

IgG

### Immunogen Catalog Number:

AG21170

### GenBank Accession Number:

BC157901

### GeneID (NCBI):

12488

### UNIPROT ID:

Q9JLQ0

### Full Name:

CD2-associated protein

### Calculated MW:

637 aa, 70 kDa

### Observed MW:

74 kDa

### Purification Method:

Antigen affinity purification

### Recommended Dilutions:

WB 1:2000-1:12000

IHC 1:400-1:4000

## Applications

### Tested Applications:

WB, IHC, ELISA

### Cited Applications:

WB

### Species Specificity:

human, mouse

### Cited Species:

human, mouse

**Note-IHC: suggested antigen retrieval with TE buffer pH 9.0; (\*) Alternatively, antigen retrieval may be performed with citrate buffer pH 6.0**

### Positive Controls:

WB : Jurkat cells, mouse kidney tissue, K-562 cells

IHC : mouse kidney tissue, mouse stomach tissue, human kidney tissue

## Background Information

CD2 associated protein (CD2AP, also known as CMS) is a scaffolding molecule that acts as an adapter protein between membrane proteins and the actin cytoskeleton (PMID: 10339567). CD2AP also plays a role in epithelial cell junction formation and affects the pathogenesis of Alzheimer's disease (PMID: 22891260; 31440393). Its mutations are associated with sporadic nephrotic syndrome and focal segmental glomerulosclerosis (FSGS) (PMID: 17713465; 19131354).

## Notable Publications

Author	Pubmed ID	Journal	Application
Soulixa Senouthai	30919150	Inflammation	WB
Chunjian Zhang	33296289	Am J Physiol Cell Physiol	WB
Hui Song	34926519	Front Med (Lausanne)	WB

## Storage

### Storage:

Store at -20°C. Stable for one year after shipment.

### Storage Buffer:

PBS with 0.02% sodium azide and 50% glycerol pH 7.3.

Aliquoting is unnecessary for -20°C storage

\*\*\* 20ul sizes contain 0.1% BSA

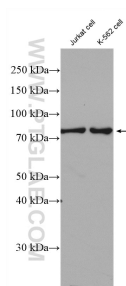
For technical support and original validation data for this product please contact:

T: 1 (888) 4PTGLAB (1-888-478-4522) (toll free in USA), or 1(312) 455-8498 (outside USA)

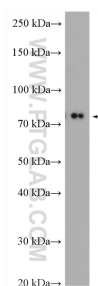
E: [proteintech@ptglab.com](mailto:proteintech@ptglab.com)  
W: [ptglab.com](http://ptglab.com)

This product is exclusively available under Proteintech Group brand and is not available to purchase from any other manufacturer.

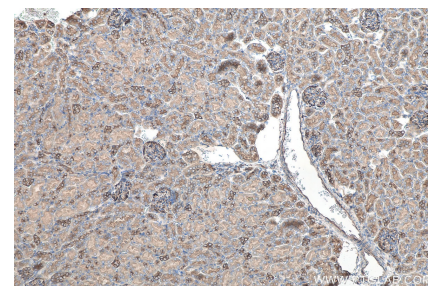
## Selected Validation Data



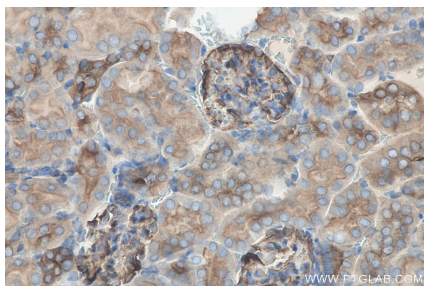
Various lysates were subjected to SDS PAGE followed by western blot with 24122-1-AP (Cd2ap antibody) at dilution of 1:6000 incubated at room temperature for 1.5 hours.



mouse kidney tissue were subjected to SDS PAGE followed by western blot with 24122-1-AP (Cd2ap antibody) at dilution of 1:10000 incubated at room temperature for 1.5 hours.



Immunohistochemical analysis of paraffin-embedded mouse kidney tissue slide using 24122-1-AP (Cd2ap antibody) at dilution of 1:2000 (under 10x lens). Heat mediated antigen retrieval with Tris-EDTA buffer (pH 9.0).



Immunohistochemical analysis of paraffin-embedded mouse kidney tissue slide using 24122-1-AP (Cd2ap antibody) at dilution of 1:2000 (under 40x lens). Heat mediated antigen retrieval with Tris-EDTA buffer (pH 9.0).