

For Research Use Only

TMEM59 Polyclonal antibody

Catalog Number: 24134-1-AP

3 Publications



Basic Information

Catalog Number:

24134-1-AP

Size:

150ul, Concentration: 450 ug/ml by Nanodrop;

Source:

Rabbit

Isotype:

IgG

Immunogen Catalog Number:

AG21150

GenBank Accession Number:

BC016374

GeneID (NCBI):

9528

UNIPROT ID:

Q9BX54

Full Name:

transmembrane protein 59

Calculated MW:

36 kDa

Observed MW:

41 kDa

Purification Method:

Antigen affinity purification

Recommended Dilutions:

WB 1:200-1:1000

IHC 1:20-1:200

IF/ICC 1:10-1:100

Applications

Tested Applications:

WB, IHC, IF/ICC, ELISA

Cited Applications:

WB, IP, CoIP

Species Specificity:

human

Cited Species:

human, bovine

Note-IHC: suggested antigen retrieval with TE buffer pH 9.0; (*) Alternatively, antigen retrieval may be performed with citrate buffer pH 6.0

Positive Controls:

WB : MCF-7 cells,

IHC : human breast cancer tissue, human liver tissue

IF/ICC : HepG2 cells,

Background Information

TMEM59 is a regulator of autophagy in response to bacterial infection. Overexpression of this protein has been found to promote apoptosis in a glioma cell line. Alternative splicing of TMEM59 results in multiple transcript variants.

Notable Publications

Author	Pubmed ID	Journal	Application
Charles P Hinzman	35656858	J Extracell Vesicles	WB
Julian Nüchel	34245671	Mol Cell	WB
Xiang Lv	38942158	J Ethnopharmacol	WB,IP,CoIP

Storage

Storage:

Store at -20°C. Stable for one year after shipment.

Storage Buffer:

PBS with 0.02% sodium azide and 50% glycerol pH 7.3.

Aliquoting is unnecessary for -20°C storage

*** 20ul sizes contain 0.1% BSA

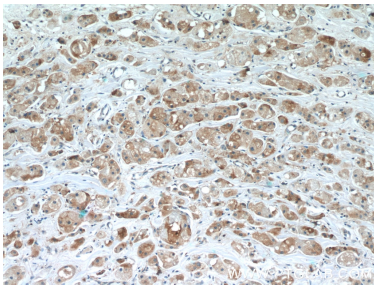
For technical support and original validation data for this product please contact:

T: 1 (888) 4PTGLAB (1-888-478-4522) (toll free in USA), or 1(312) 455-8498 (outside USA)

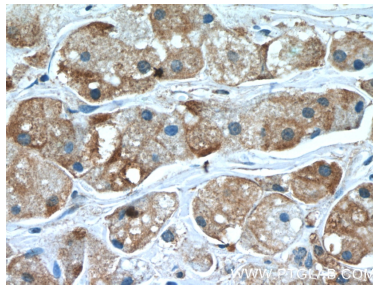
E: proteintech@ptglab.com
W: ptglab.com

This product is exclusively available under Proteintech Group brand and is not available to purchase from any other manufacturer.

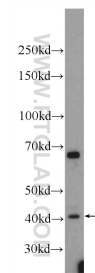
Selected Validation Data



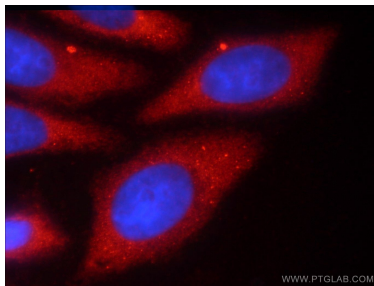
Immunohistochemical analysis of paraffin-embedded human breast cancer slide using 24134-1-AP (TMEM59 Antibody) at dilution of 1:50 (under 10x lens).



Immunohistochemical analysis of paraffin-embedded human breast cancer slide using 24134-1-AP (TMEM59 Antibody) at dilution of 1:50 (under 40x lens).



MCF-7 cells were subjected to SDS PAGE followed by western blot with 24134-1-AP (TMEM59 Antibody) at dilution of 1:300 incubated at room temperature for 1.5 hours.



Immunofluorescent analysis of HepG2 cells using 24134-1-AP (TMEM59 antibody) at dilution of 1:25 and Rhodamine-Goat anti-Rabbit IgG.