

For Research Use Only

# PSMC3 Polyclonal antibody

Catalog Number: 24142-1-AP **2 Publications**



## Basic Information

<b>Catalog Number:</b> 24142-1-AP	<b>GenBank Accession Number:</b> BC008713	<b>Purification Method:</b> Antigen Affinity purified
<b>Size:</b> 150ul , Concentration: 900 µg/ml by Nanodrop and 460 µg/ml by Bradford method using BSA as the standard;	<b>GeneID (NCBI):</b> 5702	<b>Recommended Dilutions:</b> WB 1:1000-1:8000 IP 0.5-4.0 ug for IP and 1:500-1:1000 for WB
<b>Source:</b> Rabbit	<b>Full Name:</b> proteasome (prosome, macropain) 26S subunit, ATPase, 3	<b>IHC 1:20-1:200</b> <b>IF 1:10-1:100</b>
<b>Isotype:</b> IgG	<b>Calculated MW:</b> 49 kDa	
<b>Immunogen Catalog Number:</b> AG21408	<b>Observed MW:</b> 49 kDa	

## Applications

**Tested Applications:**  
IF, IHC, IP, WB, ELISA

**Cited Applications:**  
WB

**Species Specificity:**  
human

**Cited Species:**  
human, mouse

**Note-IHC: suggested antigen retrieval with TE buffer pH 9.0; (\*) Alternatively, antigen retrieval may be performed with citrate buffer pH 6.0**

**Positive Controls:**

**WB :** HEK-293 cells, A431 cells, HeLa cells, HepG2 cells, Jurkat cells, MCF-7 cells, T-47D cells

**IP :** HeLa cells,

**IHC :** human ovary tumor tissue, human tonsillitis tissue

**IF :** HEK-293 cells, HepG2 cells

## Background Information

PSMC3(26S protease regulatory subunit 6A) is also named as TBP1, Proteasome 26S subunit ATPase 3 and belongs to the AAA ATPase family. The 26S protease is involved in the ATP-dependent degradation of ubiquitinated proteins. It is a multifunctional protein, component of the regulatory subunit of the proteasome, involved in different cellular processes.

## Notable Publications

Author	Pubmed ID	Journal	Application
Anna Maria Santoro	31797568	ChemMedChem	WB
Chaojun Yan	37589705	Elife	WB

## Storage

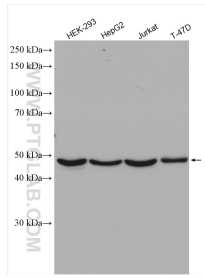
**Storage:**  
Store at -20°C. Stable for one year after shipment.  
**Storage Buffer:**  
PBS with 0.02% sodium azide and 50% glycerol pH 7.3.  
Aliquoting is unnecessary for -20°C storage

\*\*\* 20ul sizes contain 0.1% BSA

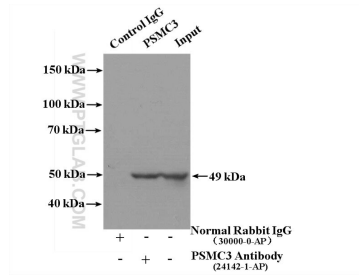
For technical support and original validation data for this product please contact:  
T: 1 (888) 4PTGLAB (1-888-478-4522) (toll free in USA), or 1(312) 455-8498 (outside USA)  
E: proteintech@ptglab.com  
W: ptglab.com

This product is exclusively available under Proteintech Group brand and is not available to purchase from any other manufacturer.

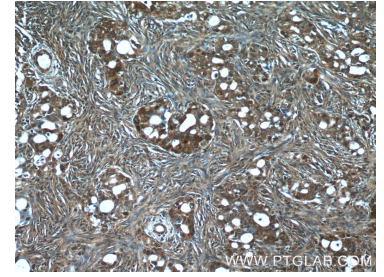
## Selected Validation Data



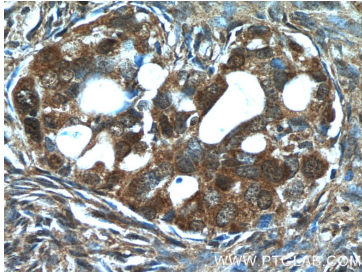
Various lysates were subjected to SDS PAGE followed by western blot with 24142-1-AP (PSMC3 antibody) at dilution of 1:4000 incubated at room temperature for 1.5 hours.



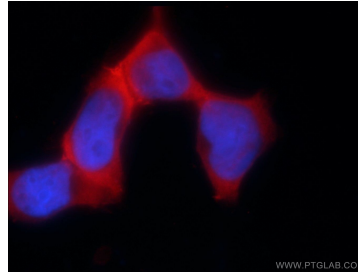
IP Result of anti-PSMC3 (IP:24142-1-AP, 4ug; Detection:24142-1-AP 1:800) with HeLa cells lysate 3200ug.



Immunohistochemical analysis of paraffin-embedded human ovary tumor tissue slide using 24142-1-AP (PSMC3 Antibody) at dilution of 1:50 (under 10x lens).



Immunohistochemical analysis of paraffin-embedded human ovary tumor tissue slide using 24142-1-AP (PSMC3 Antibody) at dilution of 1:50 (under 40x lens).



Immunofluorescent analysis of HEK-293 cells using 24142-1-AP (PSMC3 antibody) at dilution of 1:25 and Rhodamine-Goat anti-Rabbit IgG.