

For Research Use Only

CD320 Polyclonal antibody

Catalog Number: 24145-1-AP



Basic Information

Catalog Number: 24145-1-AP	GenBank Accession Number: BC000668	Purification Method: Antigen Affinity purified
Size: 150ul , Concentration: 500 µg/ml by Nanodrop;	GeneID (NCBI): 51293	Recommended Dilutions: WB 1:500-1:3000
Source: Rabbit	UNIPROT ID: Q9NPF0	
Isotype: IgG	Full Name: CD320 molecule	
Immunogen Catalog Number: AG21445	Calculated MW: 29 kDa	
	Observed MW: 70 kDa	

Applications

Tested Applications: WB, ELISA	Positive Controls: WB : HL-60 cells, HeLa cells, K-562 cells, Raji cells, human placenta tissue
Species Specificity: human	

Background Information

CD320, also known as 8D6, 8D6A or TCbLR, is a single-pass type I membrane protein containing 2 LDL-receptor class A domains. Expressed abundantly on follicular dendritic cells (FDCs), CD320 has been shown to enhance proliferation of germinal center (GC) B cells. It is the receptor for cellular uptake of transcobalamin-bound cobalamin. Defects in CD320 are the cause of methylmalonic aciduria type TCbLR (MMATC). CD320 has a calculated molecular mass of 29 kDa. The apparent molecular weight detected by this antibody is 70 kDa. The aberrant mobility of the protein by SDS-PAGE is probably caused by extensive complex glycosylation (PMID: 18779389; 23415653).

Storage

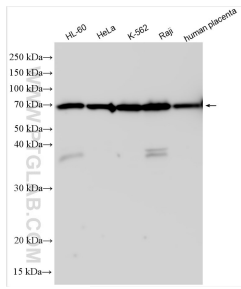
Storage:
Store at -20°C. Stable for one year after shipment.
Storage Buffer:
PBS with 0.02% sodium azide and 50% glycerol pH 7.3.
Aliquoting is unnecessary for -20°C storage

***** 20ul sizes contain 0.1%BSA**

For technical support and original validation data for this product please contact:
T: 1 (888) 4PTGLAB (1-888-478-4522) (toll free in USA), or 1(312) 455-8498 (outside USA)
E: proteintech@ptglab.com
W: ptglab.com

This product is exclusively available under Proteintech Group brand and is not available to purchase from any other manufacturer.

Selected Validation Data



Various lysates were subjected to SDS PAGE followed by western blot with 24145-1-AP (CD320 antibody) at dilution of 1:1500 incubated at room temperature for 1.5 hours.