

For Research Use Only

C-Reactive Protein/CRP Polyclonal antibody

Catalog Number: 24175-1-AP

6 Publications



Basic Information

Catalog Number: 24175-1-AP	GenBank Accession Number: BC125135	Purification Method: Antigen Affinity purified
Size: 150ul , Concentration: 300 ug/ml by Nanodrop and 240 ug/ml by Bradford method using BSA as the standard;	GeneID (NCBI): 1401	Recommended Dilutions: WB 1:500-1:1000 IHC 1:50-1:500
Source: Rabbit	UNIPROT ID: P02741	
Isotype: IgG	Full Name: C-reactive protein, pentraxin-related	
Immunogen Catalog Number: AG21466	Calculated MW: 224 aa, 25 kDa	
	Observed MW: 25-28 kDa	

Applications

Tested Applications: WB, IHC, ELISA	Positive Controls:
Cited Applications: WB, IHC	WB : rat plasma, serum from mouse injected with bacteria, human plasma
Species Specificity: human, mouse, rat	IHC : human liver tissue,
Cited Species: human, mouse, rat	
Note-IHC: suggested antigen retrieval with TE buffer pH 9.0; (*) Alternatively, antigen retrieval may be performed with citrate buffer pH 6.0	

Background Information

C-reactive protein (CRP) is an acute-phase serum protein synthesized by the liver in response to interleukin-6 (IL-6) during inflammation. The name of CRP derives from its ability to react with the C polysaccharide of Streptococcus pneumoniae. CRP is an annular, pentameric protein that belongs to the pentraxin family of proteins. CRP displays several functions associated with host defense: it promotes agglutination, bacterial capsular swelling, phagocytosis and complement fixation through its calcium-dependent binding to phosphorylcholine. It is used mainly as a marker of inflammation.

Notable Publications

Author	Pubmed ID	Journal	Application
Shizhen Qin	27575953	J Proteome Res	WB
Lingguang Kong	33254150	Biomed Mater	WB
Yong Zhou	31618575	J Proteome Res	WB

Storage

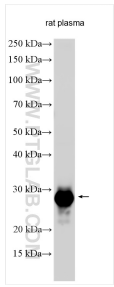
Storage:
Store at -20°C. Stable for one year after shipment.
Storage Buffer:
PBS with 0.02% sodium azide and 50% glycerol pH 7.3.
Aliquoting is unnecessary for -20°C storage

*** 20ul sizes contain 0.1% BSA

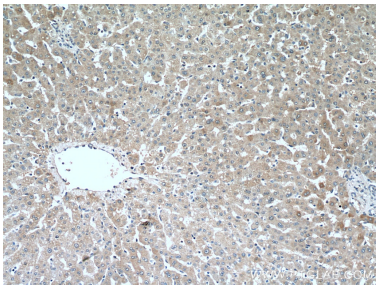
For technical support and original validation data for this product please contact:
T: 1 (888) 4PTGLAB (1-888-478-4522) (toll free in USA), or 1(312) 455-8498 (outside USA)
E: proteintech@ptglab.com
W: ptglab.com

This product is exclusively available under Proteintech Group brand and is not available to purchase from any other manufacturer.

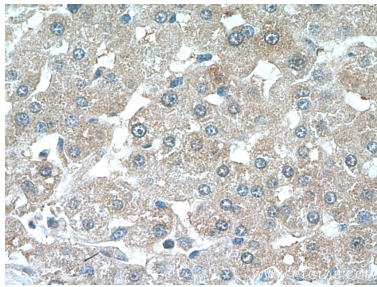
Selected Validation Data



Various lysates were subjected to SDS PAGE followed by western blot with 24175-1-AP (C-Reactive Protein/CRP antibody) at dilution of 1:500 incubated at room temperature for 1.5 hours.



Immunohistochemical analysis of paraffin-embedded human liver tissue slide using 24175-1-AP (C-Reactive Protein/CRP Antibody) at dilution of 1:200 (under 10x lens).



Immunohistochemical analysis of paraffin-embedded human liver tissue slide using 24175-1-AP (C-Reactive Protein/CRP Antibody) at dilution of 1:200 (under 40x lens).