

For Research Use Only

C2orf67 Polyclonal antibody

Catalog Number: 24183-1-AP



Basic Information

Catalog Number: 24183-1-AP	GenBank Accession Number: BC126155	Purification Method: Antigen Affinity purified
Size: 150ul , Concentration: 700 µg/ml by Nanodrop and 333 µg/ml by Bradford method using BSA as the standard;	GeneID (NCBI): 151050	Recommended Dilutions: WB 1:500-1:3000 IHC 1:20-1:200 IF 1:20-1:200
Source: Rabbit	Full Name: chromosome 2 open reading frame 67	
Isotype: IgG	Calculated MW: 987 aa, 112 kDa	
Immunogen Catalog Number: AG21471	Observed MW: 112 kDa, 80 kDa	

Applications

Tested Applications: IF, IHC, WB, ELISA	Positive Controls:
Species Specificity: human, mouse, rat	WB : mouse testis tissue, rat testis tissue
Note-IHC: suggested antigen retrieval with TE buffer pH 9.0; (*) Alternatively, antigen retrieval may be performed with citrate buffer pH 6.0	IHC : human testis tissue, human kidney tissue
	IF : A549 cells,

Background Information

C2orf67, also termed as chromosome 2 open reading frame 67, encodes a 705 amino-acid protein. It exists a variant, which encodes 987 amino-acid protein. The C2orf56 may express in lymphoid /immune and nervous system. The specific function of C2orf67 is still non-known.

Storage

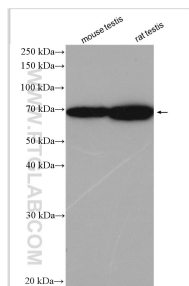
Storage:
Store at -20°C. Stable for one year after shipment.
Storage Buffer:
PBS with 0.02% sodium azide and 50% glycerol pH 7.3.
Aliquoting is unnecessary for -20°C storage

*** 20ul sizes contain 0.1% BSA

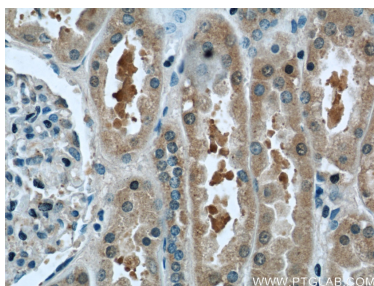
For technical support and original validation data for this product please contact:
T: 1 (888) 4PTGLAB (1-888-478-4522) (toll free in USA), or 1(312) 455-8498 (outside USA) E: proteintech@ptglab.com W: ptglab.com

This product is exclusively available under Proteintech Group brand and is not available to purchase from any other manufacturer.

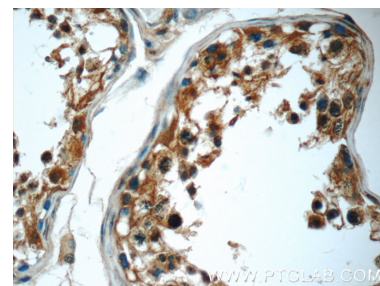
Selected Validation Data



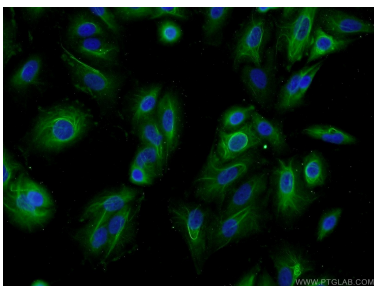
Various lysates were subjected to SDS PAGE followed by western blot with 24183-1-AP (C2orf67 antibody) at dilution of 1:1500 incubated at room temperature for 1.5 hours.



Immunohistochemical analysis of paraffin-embedded human kidney tissue slide using 24183-1-AP (C2orf67 Antibody) at dilution of 1:50 (under 40x lens).



Immunohistochemical analysis of paraffin-embedded human testis tissue slide using 24183-1-AP (C2orf67 Antibody) at dilution of 1:50 (under 40x lens).



Immunofluorescent analysis of A549 cells using 24183-1-AP (C2orf67 antibody) at dilution of 1:50 and Alexa Fluor 488-conjugated AffiniPure Goat Anti-Rabbit IgG(H+L).