

For Research Use Only

ROMO1 Polyclonal antibody, PBS Only

Catalog Number: 24200-1-PBS

Featured Product



Basic Information

Catalog Number:

24200-1-PBS

Size:

100ug, Concentration: 1 mg/ml by Nanodrop;

Source:

Rabbit

Isotype:

IgG

Immunogen Catalog Number:

AG20368

GenBank Accession Number:

BC008488

GeneID (NCBI):

140823

UNIPROT ID:

P60602

Full Name:

reactive oxygen species modulator 1

Calculated MW:

79 aa, 8 kDa

Observed MW:

6-10 kDa

Purification Method:

Antigen affinity purification

Applications

Tested Applications:

WB, IHC, Indirect ELISA

Species Specificity:

human

Storage

Storage:

Store at -80°C.

Storage Buffer:

PBS only, pH7.3

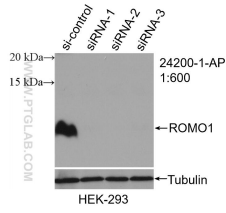
For technical support and original validation data for this product please contact:

T: 1 (888) 4PTGLAB (1-888-478-4522) (toll free in USA), or 1(312) 455-8498 (outside USA)

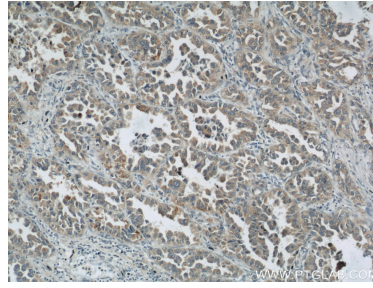
E: proteintech@ptglab.com
W: ptglab.com

This product is exclusively available under Proteintech Group brand and is not available to purchase from any other manufacturer.

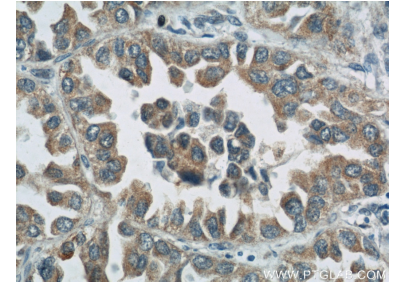
Selected Validation Data



WB result of ROMO1 antibody (24200-1-AP; 1:600; incubated at room temperature for 1.5 hours) with sh-Control and sh-ROMO1 transfected HEK-293 cells. This data was developed using the same antibody clone with 24200-1-PBS in a different storage buffer formulation.



Immunohistochemical analysis of paraffin-embedded human lung cancer using 24200-1-AP (ROMO1 antibody) at dilution of 1:50 (under 10x lens). This data was developed using the same antibody clone with 24200-1-PBS in a different storage buffer formulation.



Immunohistochemical analysis of paraffin-embedded human lung cancer using 24200-1-AP (ROMO1 antibody) at dilution of 1:50 (under 40x lens). This data was developed using the same antibody clone with 24200-1-PBS in a different storage buffer formulation.