

For Research Use Only

FBXO28 Polyclonal antibody

Catalog Number: 24282-1-AP **1 Publications**



Basic Information

Catalog Number: 24282-1-AP	GenBank Accession Number: BC031576	Purification Method: Antigen affinity purification
Size: 150ul , Concentration: 550 µg/ml by Nanodrop and 293 µg/ml by Bradford method using BSA as the standard;	GeneID (NCBI): 23219	Recommended Dilutions: WB 1:500-1:2000 IHC 1:20-1:200
Source: Rabbit	Full Name: F-box protein 28	
Isotype: IgG	Calculated MW: 368 aa, 41 kDa	
Immunogen Catalog Number: AG14900	Observed MW: 42 kDa	

Applications

Tested Applications: IHC, WB, ELISA	Positive Controls: WB : HEK-293T cells, HeLa cells, PC-3 cells
Cited Applications: IHC	IHC : human kidney tissue, human breast cancer tissue
Species Specificity: human	
Cited Species: human	
Note-IHC: suggested antigen retrieval with TE buffer pH 9.0; (*) Alternatively, antigen retrieval may be performed with citrate buffer pH 6.0	

Background Information

FBXO28 also named as F box only protein 28 is a 368 amino-acid protein, which contain 1 F-box domain and belongs to F-box protein family. FBXO28 is a critical component of SCF (Skp1-CUL-1-F-box protein) type E3 ubiquitin ligase complex and are involved in substrate recognition and recruitment for ubiquitination. FBXO28 encodes a cell cycle regulated protein with a critical function in tumor cell proliferation. FBXO28 assembles an SCF-FBXO28 ubiquitin ligase whose activity is required during progression through the cell cycle by cyclin-dependent kinase 1/2 mediated phosphorylation. FBXO28 expression and phosphorylation to be strongly associated with poor prognosis and worse overall survival in human breast cancer.

Notable Publications

Author	Pubmed ID	Journal	Application
Xinran Qiao	37596321	Oncogene	IHC

Storage

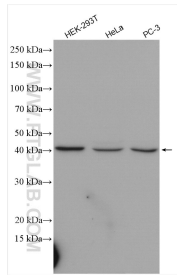
Storage:
Store at -20°C. Stable for one year after shipment.
Storage Buffer:
PBS with 0.02% sodium azide and 50% glycerol pH 7.3.
Aliquoting is unnecessary for -20°C storage

***** 20ul sizes contain 0.1% BSA**

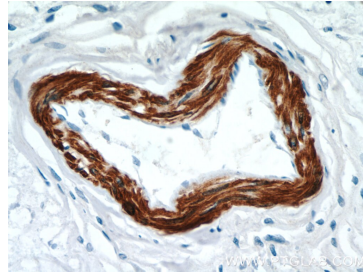
For technical support and original validation data for this product please contact:
T: 1 (888) 4PTGLAB (1-888-478-4522) (toll free in USA), or 1(312) 455-8498 (outside USA)
E: proteintech@ptglab.com
W: ptglab.com

This product is exclusively available under Proteintech Group brand and is not available to purchase from any other manufacturer.

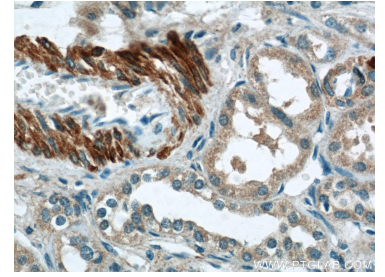
Selected Validation Data



Various lysates were subjected to SDS PAGE followed by western blot with 24282-1-AP (FBXO28 antibody) at dilution of 1:1000 incubated at room temperature for 1.5 hours.



Immunohistochemical analysis of paraffin-embedded human breast cancer tissue slide using 24282-1-AP (FBXO28 Antibody) at dilution of 1:50 (under 40x lens).



Immunohistochemical analysis of paraffin-embedded human kidney tissue slide using 24282-1-AP (FBXO28 Antibody) at dilution of 1:50 (under 40x lens).