

For Research Use Only

PDE11A Polyclonal antibody

Catalog Number: 24287-1-AP



Basic Information

| | | |
|---|--|--|
| Catalog Number: 24287-1-AP | GenBank Accession Number: BC114431 | Purification Method: Antigen affinity purification |
| Size: 150ul , Concentration: 400 ug/ml by Nanodrop; | GeneID (NCBI): 50940 | Recommended Dilutions: WB: 1:500-1:1000 |
| Source: Rabbit | UNIPROT ID: Q9HCR9 | |
| Isotype: IgG | Full Name: phosphodiesterase 11A | |
| Immunogen Catalog Number: AG16495 | Calculated MW: 934 aa, 105 kDa | |
| | Observed MW: 66 kDa | |

Applications

| | |
|--|---|
| Tested Applications: WB, ELISA | Positive Controls: WB : mouse cerebellum tissue, mouse liver tissue, rat liver tissue |
| Species Specificity: human, mouse, rat | |

Background Information

PDE11A is a dual-specificity cyclic nucleotide phosphodiesterase that regulates cAMP and cGMP signaling in a tissue-restricted manner, with prominent roles in the endocrine system and brain. By shaping compartmentalized second-messenger signaling, PDE11A controls steroidogenesis, neuronal plasticity, and hormone responsiveness. Genetic alterations in PDE11A underlie adrenal hyperplasia, endocrine dysfunction, and neuropsychiatric phenotypes, highlighting its importance in cyclic nucleotide homeostasis.

Storage

Storage:
Store at -20°C. Stable for one year after shipment.
Storage Buffer:
PBS with 0.02% sodium azide and 50% glycerol, pH7.3
Aliquoting is unnecessary for -20°C storage

*** 20ul sizes contain 0.1% BSA

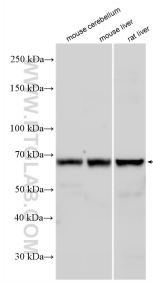
For technical support and original validation data for this product please contact:

T: 1 (888) 4PTGLAB (1-888-478-4522) (toll free in USA), or 1(312) 455-8498 (outside USA)

E: proteintech@ptglab.com
W: ptglab.com

This product is exclusively available under Proteintech Group brand and is not available to purchase from any other manufacturer.

Selected Validation Data



Various lysates were subjected to SDS PAGE followed by western blot with 24287-1-AP (PDE11A antibody) at dilution of 1:600 incubated at room temperature for 1.5 hours.