

For Research Use Only

CSTF3 Polyclonal antibody

Catalog Number: 24290-1-AP

Featured Product

3 Publications



Basic Information

Catalog Number:

24290-1-AP

Size:

150ul, Concentration: 240 ug/ml by Nanodrop and 207 ug/ml by Bradford method using BSA as the standard;

Source:

Rabbit

Isotype:

IgG

Immunogen Catalog Number:

AG17930

GenBank Accession Number:

BC059948

GeneID (NCBI):

1479

UNIPROT ID:

Q12996

Full Name:

cleavage stimulation factor, 3' pre-RNA, subunit 3, 77kDa

Calculated MW:

717 aa, 83 kDa

Observed MW:

77-83 kDa

Purification Method:

Antigen affinity purification

Recommended Dilutions:

WB 1:500-1:2000

IP 0.5-4.0 ug for 1.0-3.0 mg of total protein lysate

IHC 1:50-1:500

Applications

Tested Applications:

WB, IHC, IP, ELISA

Cited Applications:

WB, IF, IP

Species Specificity:

human

Cited Species:

human, mouse

Note-IHC: suggested antigen retrieval with TE buffer pH 9.0; (*) Alternatively, antigen retrieval may be performed with citrate buffer pH 6.0

Positive Controls:

WB: A431 cells, K-562 cells, HEK-293 cells

IP: A431 cells,

IHC: human stomach cancer tissue,

Notable Publications

Author	Pubmed ID	Journal	Application
Ziqian Min	36444304	iScience	WB,IF,IP
Xin Luo	38898019	Cell Death Dis	IF
Bingnan Chen	38560280	Comput Struct Biotechnol J	WB

Storage

Storage:

Store at -20°C. Stable for one year after shipment.

Storage Buffer:

PBS with 0.02% sodium azide and 50% glycerol pH 7.3.

Aliquoting is unnecessary for -20°C storage

*** 20ul sizes contain 0.1% BSA

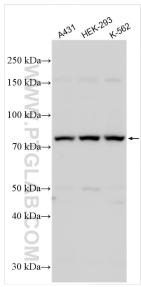
For technical support and original validation data for this product please contact:

T: 1 (888) 4PTGLAB (1-888-478-4522) (toll free in USA), or 1(312) 455-8498 (outside USA)

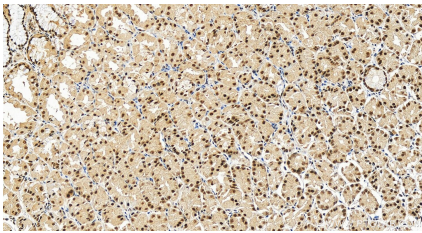
E: proteintech@ptglab.com
W: ptglab.com

This product is exclusively available under Proteintech Group brand and is not available to purchase from any other manufacturer.

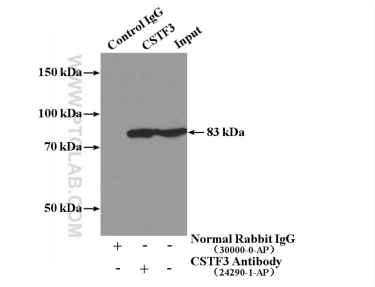
Selected Validation Data



Various lysates were subjected to SDS PAGE followed by western blot with 24290-1-AP (CSTF3 antibody) at dilution of 1:1000 incubated at room temperature for 1.5 hours.



Immunohistochemical analysis of paraffin-embedded human stomach cancer tissue slide using 24290-1-AP (CSTF3 antibody) at dilution of 1:200 (under 20x lens). Heat mediated antigen retrieval with Tris-EDTA buffer (pH 9.0).



IP result of anti-CSTF3 (IP:24290-1-AP, 4ug; Detection:24290-1-AP 1:500) with A431 cells lysate 1200ug.