

For Research Use Only

ERCC6/CSB Polyclonal antibody

Catalog Number: 24291-1-AP

Featured Product

3 Publications



Basic Information

Catalog Number:
24291-1-AP

Size:
150ul, Concentration: 600 µg/ml by
Nanodrop;

Source:
Rabbit

Isotype:
IgG

Immunogen Catalog Number:
AG18009

GenBank Accession Number:
BC127104

GeneID (NCBI):
2074

Full Name:
excision repair cross-complementing
rodent repair deficiency,
complementation group 6

Calculated MW:
1493 aa, 168 kDa

Observed MW:
170 kDa

Purification Method:
Antigen affinity purification

Recommended Dilutions:
WB 1:1000-1:6000
IP 0.5-4.0 ug for IP and 1:200-1:1000
for WB

Applications

Tested Applications:
IP, WB, ELISA

Cited Applications:
IF, WB

Species Specificity:
human

Cited Species:
human, mouse

Positive Controls:

WB : DU 145 cells, HeLa cells, PC-3 cells

IP : HeLa cells,

Background Information

Notable Publications

Author	Pubmed ID	Journal	Application
Rongbin Wei	34066883	Int J Mol Sci	WB
Peng Zou	35392536	Front Mol Biosci	WB,IF
Alexandra K Ciminera	34426491	Life Sci Alliance	WB

Storage

Storage:

Store at -20°C. Stable for one year after shipment.

Storage Buffer:

PBS with 0.02% sodium azide and 50% glycerol pH 7.3.

Aliquoting is unnecessary for -20°C storage

*** 20ul sizes contain 0.1% BSA

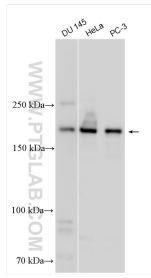
For technical support and original validation data for this product please contact:

T: 1 (888) 4PTGLAB (1-888-478-4522) (toll free
in USA), or 1(312) 455-8498 (outside USA)

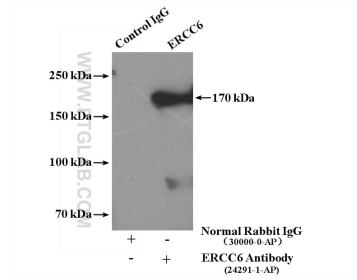
E: proteintech@ptglab.com
W: ptglab.com

This product is exclusively available under Proteintech Group brand and is not available to purchase from any other manufacturer.

Selected Validation Data



Various lysates were subjected to SDS PAGE followed by western blot with 24291-1-AP (ERCC6/CSB antibody) at dilution of 1:3000 incubated at room temperature for 1.5 hours.



IP Result of anti-ERCC6/CSB (IP:24291-1-AP, 4ug; Detection:24291-1-AP 1:300) with HeLa cells lysate 3200ug.