

For Research Use Only

LIPI Polyclonal antibody

Catalog Number: 24300-1-AP



Basic Information

| | | |
|--|--|--|
| Catalog Number: 24300-1-AP | GenBank Accession Number: BC148691 | Purification Method: Antigen affinity purification |
| Size: 150ul , Concentration: 800 µg/ml by Nanodrop and 433 µg/ml by Bradford method using BSA as the standard; | GeneID (NCBI): 149998 | Recommended Dilutions: WB 1:200-1:1000 IHC 1:50-1:500 |
| Source: Rabbit | Full Name: Lipase, member I | |
| Isotype: IgG | Calculated MW: 460 aa, 55 kDa | |
| Immunogen Catalog Number: AG19024 | Observed MW: 50 kDa | |

Applications

| | |
|--|---|
| Tested Applications: IHC, WB, ELISA | Positive Controls: WB : A549 cells, mouse lung tissue IHC : human testis tissue, |
| Species Specificity: human, mouse | |
| Note-IHC: suggested antigen retrieval with TE buffer pH 9.0; (*) Alternatively, antigen retrieval may be performed with citrate buffer pH 6.0 | |

Background Information

Storage

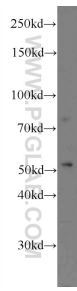
Storage:
Store at -20°C. Stable for one year after shipment.
Storage Buffer:
PBS with 0.02% sodium azide and 50% glycerol pH 7.3.
Aliquoting is unnecessary for -20°C storage

*** 20ul sizes contain 0.1% BSA

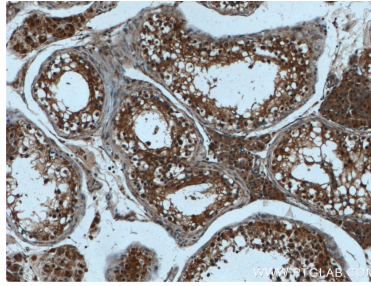
For technical support and original validation data for this product please contact:
T: 1 (888) 4PTGLAB (1-888-478-4522) (toll free in USA), or 1(312) 455-8498 (outside USA) E: proteintech@ptglab.com
W: ptglab.com

This product is exclusively available under Proteintech Group brand and is not available to purchase from any other manufacturer.

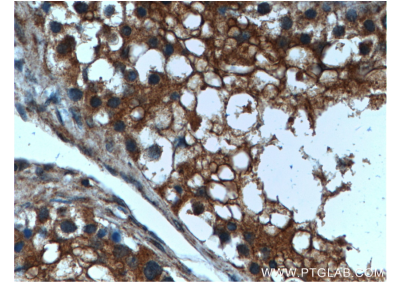
Selected Validation Data



A549 cells were subjected to SDS PAGE followed by western blot with 24300-1-AP (LIPI Antibody) at dilution of 1:300 incubated at room temperature for 1.5 hours.



Immunohistochemical analysis of paraffin-embedded human testis tissue slide using 24300-1-AP (LIPI antibody) at dilution of 1:200 (under 10x lens).



Immunohistochemical analysis of paraffin-embedded human testis tissue slide using 24300-1-AP (LIPI antibody) at dilution of 1:200 (under 40x lens).