

For Research Use Only

ISLR Polyclonal antibody

Catalog Number: 24306-1-AP



Basic Information

Catalog Number: 24306-1-AP	GenBank Accession Number: BC022478	Purification Method: Antigen affinity purification
Size: 150ul , Concentration: 800 ug/ml by Nanodrop;	GeneID (NCBI): 3671	Recommended Dilutions: WB 1:500-1:1000
Source: Rabbit	UNIPROT ID: O14498	IHC 1:50-1:500
Isotype: IgG	Full Name: immunoglobulin superfamily containing leucine-rich repeat	IF/ICC 1:200-1:800
Immunogen Catalog Number: AG19446	Calculated MW: 428 aa, 46 kDa	
	Observed MW: 44-46 kDa	

Applications

Tested Applications: WB, IHC, IF/ICC, ELISA	Positive Controls:
Species Specificity: mouse	WB : NIH/3T3 cells, rat thyroid gland tissue, mouse retina tissue
Note-IHC: suggested antigen retrieval with TE buffer pH 9.0; (*) Alternatively, antigen retrieval may be performed with citrate buffer pH 6.0	IHC : mouse skeletal muscle tissue,
	IF/ICC : A549 cells, SH-SY5Y cells

Background Information

The Immunoglobulin superfamily containing leucine-rich repeat protein (ISLR), is involved in various biological events, such as embryonic development, Gaucher's disease, and replicative senescence of fibroblasts in some organs, including the heart, pancreas, and bone marrow. ISLR, also known as meflin, is a newly discovered marker of mesenchymal stem cells, which is involved in pathological fibrosis and the cancer microenvironment. (PMID: 34713300)

Storage

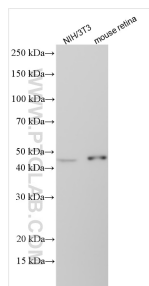
Storage:
Store at -20°C. Stable for one year after shipment.
Storage Buffer:
PBS with 0.02% sodium azide and 50% glycerol, pH7.3
Aliquoting is unnecessary for -20°C storage

*** 20ul sizes contain 0.1% BSA

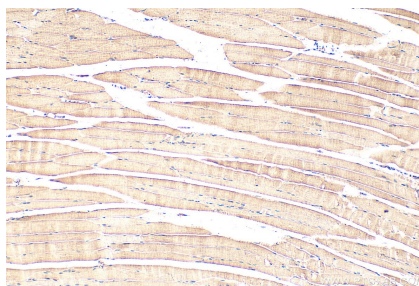
For technical support and original validation data for this product please contact:
T: 1 (888) 4PTGLAB (1-888-478-4522) (toll free in USA), or 1(312) 455-8498 (outside USA)
E: proteintech@ptglab.com
W: ptglab.com

This product is exclusively available under Proteintech Group brand and is not available to purchase from any other manufacturer.

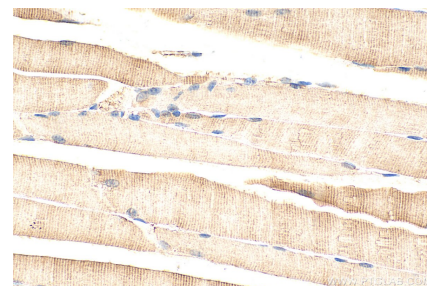
Selected Validation Data



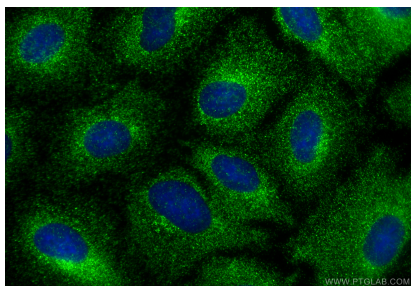
Various lysates were subjected to SDS PAGE followed by western blot with 24306-1-AP (ISLR antibody) at dilution of 1:600 incubated at room temperature for 1.5 hours.



Immunohistochemical analysis of paraffin-embedded mouse skeletal muscle tissue slide using 24306-1-AP (ISLR antibody) at dilution of 1:200 (under 10x lens). Heat mediated antigen retrieval with Tris-EDTA buffer (pH 9.0).



Immunohistochemical analysis of paraffin-embedded mouse skeletal muscle tissue slide using 24306-1-AP (ISLR antibody) at dilution of 1:200 (under 40x lens). Heat mediated antigen retrieval with Tris-EDTA buffer (pH 9.0).



Immunofluorescent analysis of (-20°C Methanol) fixed A549 cells using ISLR antibody (24306-1-AP) at dilution of 1:400 and CoraLite®488-Conjugated Goat Anti-Rabbit IgG(H+L) (SA00013-2).