

For Research Use Only

EEPD1 Polyclonal antibody

Catalog Number: 24310-1-AP

1 Publications



Basic Information

Catalog Number:

24310-1-AP

Size:

150ul, Concentration: 600 ug/ml by Nanodrop;

Source:

Rabbit

Isotype:

IgG

Immunogen Catalog Number:

AG19423

GenBank Accession Number:

BC065518

GeneID (NCBI):

80820

UNIPROT ID:

Q7L9B9

Full Name:

endonuclease/exonuclease/phosphatase family domain containing 1

Calculated MW:

569 aa, 62 kDa

Observed MW:

63 kDa

Purification Method:

Antigen affinity purification

Recommended Dilutions:

WB 1:2000-1:10000

Applications

Tested Applications:

WB, ELISA

Cited Applications:

WB

Species Specificity:

human, mouse

Cited Species:

mouse

Positive Controls:

WB : COLO 320 cells, PC-3 cells

Background Information

EEPD1, also known as KIAA1706, is a 198 amino-acid protein belonging to the endonuclease/exonuclease/phosphatase family domain containing 11. EEPD1 is localized in the cell nucleus and may be involved in the splicing of DNA. The function of EEPD1 is still unknown and needs to be further studied.

Notable Publications

Author	Pubmed ID	Journal	Application
Kaiwen Yu	39210825	Acta Biochim Biophys Sin (Shanghai)	WB

Storage

Storage:

Store at -20°C. Stable for one year after shipment.

Storage Buffer:

PBS with 0.02% sodium azide and 50% glycerol pH 7.3.

Aliquoting is unnecessary for -20°C storage

*** 20ul sizes contain 0.1% BSA

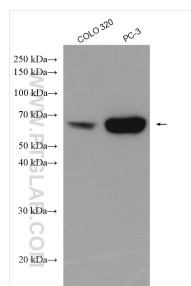
For technical support and original validation data for this product please contact:

T: 1 (888) 4PTGLAB (1-888-478-4522) (toll free in USA), or 1(312) 455-8498 (outside USA)

E: proteintech@ptglab.com
W: ptglab.com

This product is exclusively available under Proteintech Group brand and is not available to purchase from any other manufacturer.

Selected Validation Data



Various lysates were subjected to SDS PAGE followed by western blot with 24310-1-AP (EEED1 antibody) at dilution of 1:5000 incubated at room temperature for 1.5 hours.