

For Research Use Only

KDM2A Polyclonal antibody

Catalog Number: 24311-1-AP

5 Publications



Basic Information

Catalog Number:

24311-1-AP

Size:

150ul, Concentration: 700 µg/ml by Nanodrop and 367 µg/ml by Bradford method using BSA as the standard;

Source:

Rabbit

Isotype:

IgG

Immunogen Catalog Number:

AG19448

GenBank Accession Number:

BC064360

GeneID (NCBI):

22992

Full Name:

lysine (K)-specific demethylase 2A

Calculated MW:

1162 aa, 133 kDa

Observed MW:

126 kDa

Purification Method:

Antigen affinity purification

Recommended Dilutions:

WB 1:500-1:2000

IP 0.5-4.0 µg for IP and 1:500-1:1000 for WB

Applications

Tested Applications:

IP, WB, ELISA

Cited Applications:

CoIP, IF, IHC, IP, WB

Species Specificity:

human, mouse

Cited Species:

human

Positive Controls:

WB : Jurkat cells, NIH/3T3 cells

IP : HeLa cells,

Background Information

KDM2A (Lysine-specific demethylase 2A) is also named as CXXC8, FBL7, FBXL11, JHDM1A, KIAA1004 and belongs to the JHDM1 histone demethylase family. It is required to maintain the heterochromatic state, and playing a role in epigenetic silencing. KDM2A is one of the four subunits of the E3 ubiquitin protein ligase complex (SCF) with SKP1, CUL1, RBX1, Fbox protein bringing ubiquitin conjugating enzymes to substrates recruited by F-box.

Notable Publications

Author	Pubmed ID	Journal	Application
Wenting Song	36209140	Cell Death Dis	WB, IHC
Yilong Ai	34117688	J Cell Mol Med	WB
Nan Song	28722108	J Cell Physiol	WB

Storage

Storage:

Store at -20°C. Stable for one year after shipment.

Storage Buffer:

PBS with 0.02% sodium azide and 50% glycerol pH 7.3.

Aliquoting is unnecessary for -20°C storage

*** 20ul sizes contain 0.1% BSA

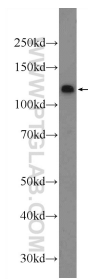
For technical support and original validation data for this product please contact:

T: 1 (888) 4PTGLAB (1-888-478-4522) (toll free in USA), or 1(312) 455-8498 (outside USA)

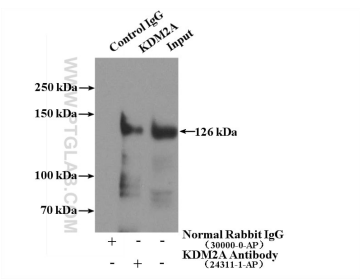
E: proteintech@ptglab.com
W: ptglab.com

This product is exclusively available under Proteintech Group brand and is not available to purchase from any other manufacturer.

Selected Validation Data



Jurkat cells were subjected to SDS PAGE followed by western blot with 24311-1-AP (KDM2A Antibody) at dilution of 1:1000 incubated at room temperature for 1.5 hours.



IP Result of anti-KDM2A (IP:24311-1-AP, 4ug; Detection:24311-1-AP 1:600) with HeLa cells lysate 1600ug.