

For Research Use Only

FXI Polyclonal antibody

Catalog Number: 24321-1-AP



Basic Information

| | | |
|--|--|--|
| Catalog Number: 24321-1-AP | GenBank Accession Number: BC119014 | Purification Method: Antigen affinity purification |
| Size: 150ul , Concentration: 750 µg/ml by Nanodrop and 227 µg/ml by Bradford method using BSA as the standard; | GeneID (NCBI): 2160 | Recommended Dilutions: WB 1:500-1:3000 |
| Source: Rabbit | UNIPROT ID: P03951 | |
| Isotype: IgG | Full Name: coagulation factor XI | |
| Immunogen Catalog Number: AG18004 | Calculated MW: 625 aa, 70 kDa | |
| | Observed MW: 70 kDa | |

Applications

| | |
|---|---|
| Tested Applications: WB, ELISA | Positive Controls: WB : rat liver tissue, |
| Species Specificity: human, rat | |

Background Information

Factor XI (FXI) is the zymogen of a blood coagulation protease, factor XIa (FXIa), that contributes to hemostasis by activating factor IX. Factor XI is a precursor of an S1 serine protease found in blood plasma. When activated to FXIa, it plays a crucial role in forming and stabilizing fibrin by triggering the activation of factor IX (PMID: 38545505). FXI has 2 isoforms with the molecular mass of 70 kDa and 64 kDa. Isoform 2 is produced by platelets and megakaryocytes but absent from other blood cells.

Storage

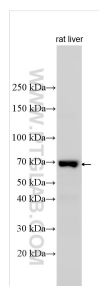
Storage:
Store at -20°C. Stable for one year after shipment.
Storage Buffer:
PBS with 0.02% sodium azide and 50% glycerol, pH7.3
Aliquoting is unnecessary for -20°C storage

*** 20ul sizes contain 0.1% BSA

For technical support and original validation data for this product please contact:
T: 1 (888) 4PTGLAB (1-888-478-4522) (toll free in USA), or 1(312) 455-8498 (outside USA)
E: proteintech@ptglab.com
W: ptglab.com

This product is exclusively available under Proteintech Group brand and is not available to purchase from any other manufacturer.

Selected Validation Data



Various lysates were subjected to SDS PAGE followed by western blot with 24321-1-AP (FXI antibody) at dilution of 1:1500 incubated at room temperature for 1.5 hours.