

For Research Use Only

SGLT3/SLC5A4 Polyclonal antibody

Catalog Number: 24327-1-AP

3 Publications



Basic Information

Catalog Number:

24327-1-AP

Size:

150ul, Concentration: 900 ug/ml by Nanodrop and 493 ug/ml by Bradford method using BSA as the standard;

Source:

Rabbit

Isotype:

IgG

Immunogen Catalog Number:

AG19391

GenBank Accession Number:

BC153069

GeneID (NCBI):

6527

UNIPROT ID:

Q9NY91

Full Name:

solute carrier family 5 (low affinity glucose cotransporter), member 4

Calculated MW:

659 aa, 72 kDa

Observed MW:

60-70 kDa

Purification Method:

Antigen affinity purification

Recommended Dilutions:

WB 1:500-1:2000

IP 0.5-4.0 ug for 1.0-3.0 mg of total protein lysate

IHC 1:20-1:200

Applications

Tested Applications:

WB, IP, IHC, ELISA

Cited Applications:

WB, IF, IHC

Species Specificity:

human, mouse, rat

Cited Species:

human, mouse

Positive Controls:

WB: mouse kidney tissue,

IP: mouse kidney tissue,

IHC: human kidney tissue,

Note-IHC: suggested antigen retrieval with TE buffer pH 9.0; (*) Alternatively, antigen retrieval may be performed with citrate buffer pH 6.0

Background Information

SLC5A4, also known as SGLT3, is a sugar sensor that depolarizes the plasma membrane in response to external glucose (PMID: 12748858, 20421923). SGLT3 mediates the influx of sodium ions into the cell but does not transport sugars, also potentially activated by imino sugars such as deoxynojirimycin (PMID: 22766068, 13130073). SGLT3 is a plasma membrane protein, shares 70% identity with SGLT1, and is expressed in the small intestine (cholinergic neurons), skeletal muscle, kidney, uterus, and testis (PMID: 12748858). SGLT3 protein at apparent molecular masses of 72 kDa and 80 kDa in human kidney tissue and HK-2 cells (PMID: 22766068).

Notable Publications

Author	Pubmed ID	Journal	Application
Caterina Franco	34769857	Int J Environ Res Public Health	WB,IF
Matúš Soták	33385407	Life Sci	WB,IF
Emi Ono	29677207	PLoS One	IHC

Storage

Storage:

Store at -20°C. Stable for one year after shipment.

Storage Buffer:

PBS with 0.02% sodium azide and 50% glycerol pH 7.3.

Aliquoting is unnecessary for -20°C storage

*** 20ul sizes contain 0.1% BSA

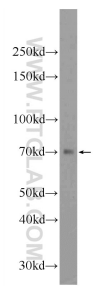
For technical support and original validation data for this product please contact:

T: 1 (888) 4PTGLAB (1-888-478-4522) (toll free in USA), or 1(312) 455-8498 (outside USA)

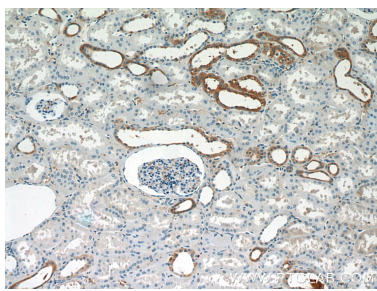
E: proteintech@ptglab.com
W: ptglab.com

This product is exclusively available under Proteintech Group brand and is not available to purchase from any other manufacturer.

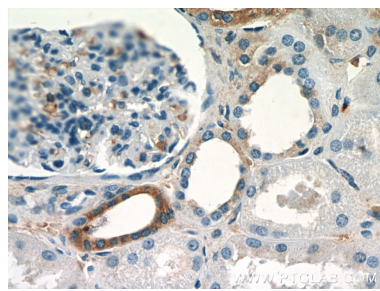
Selected Validation Data



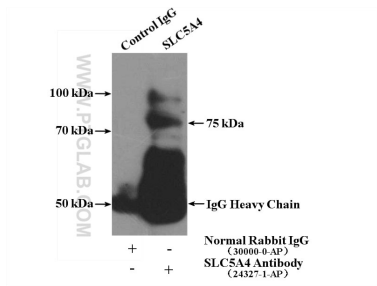
mouse kidney tissue were subjected to SDS PAGE followed by western blot with 24327-1-AP (SGLT3/SLC5A4 antibody at dilution of 1:1000 incubated at room temperature for 1.5 hours.



Immunohistochemical analysis of paraffin-embedded human kidney slide using 24327-1-AP (SGLT3/SLC5A4 antibody at dilution of 1:50.



Immunohistochemical analysis of paraffin-embedded human kidney slide using 24327-1-AP (SGLT3/SLC5A4 antibody at dilution of 1:50.



IP result of anti-SGLT3/SLC5A4 (IP:24327-1-AP, 4ug; Detection:24327-1-AP 1:500) with mouse kidney tissue lysate 4000ug.