

For Research Use Only

ANKRD16 Polyclonal antibody

Catalog Number: 24334-1-AP



Basic Information

Catalog Number: 24334-1-AP	GenBank Accession Number: BC062346	Purification Method: Antigen affinity purification
Size: 150ul , Concentration: 650 ug/ml by Nanodrop and 320 ug/ml by Bradford method using BSA as the standard;	GeneID (NCBI): 54522	Recommended Dilutions: WB 1:500-1:1000
Source: Rabbit	UNIPROT ID: Q6P6B7	IHC 1:250-1:1000
Isotype: IgG	Full Name: ankyrin repeat domain 16	IF/ICC 1:50-1:500
Immunogen Catalog Number: AG19369	Calculated MW: 361 aa, 39 kDa	
	Observed MW: 39-45 kDa	

Applications

Tested Applications: WB, IHC, IF/ICC, ELISA	Positive Controls:
Species Specificity: human, mouse	WB : HeLa cells, mouse liver tissue, PC-3 cells
Note-IHC: suggested antigen retrieval with TE buffer pH 9.0; (*) Alternatively, antigen retrieval may be performed with citrate buffer pH 6.0	IHC : human ovary cancer tissue,
	IF/ICC : HeLa cells,

Background Information

ANKRD16, a vertebrate-specific protein that contains ankyrin repeats, binds directly to the catalytic domain of AlaRS. Serine that is misactivated by AlaRS is captured by the lysine side chains of ANKRD16, which prevents the charging of serine adenylates to tRNA^{Ala} and precludes serine misincorporation in nascent peptides. The deletion of Ankrd16 in the brains of Aarssti/sti mice causes widespread protein aggregation and neuron loss (PMID: 29769718).

Storage

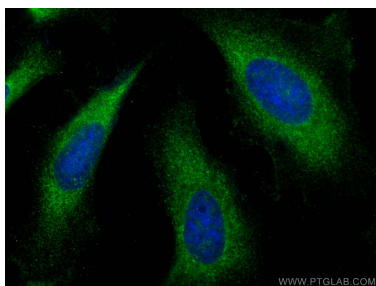
Storage:
Store at -20°C. Stable for one year after shipment.
Storage Buffer:
PBS with 0.02% sodium azide and 50% glycerol pH 7.3.
Aliquoting is unnecessary for -20°C storage

*** 20ul sizes contain 0.1% BSA

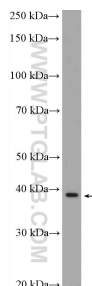
For technical support and original validation data for this product please contact:
T: 1 (888) 4PTGLAB (1-888-478-4522) (toll free in USA), or 1(312) 455-8498 (outside USA)
E: proteintech@ptglab.com
W: ptglab.com

This product is exclusively available under Proteintech Group brand and is not available to purchase from any other manufacturer.

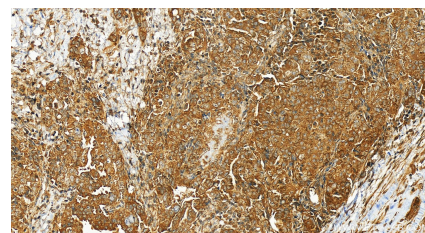
Selected Validation Data



Immunofluorescent analysis of (-20°C Ethanol) fixed HeLa cells using ANKRD16 antibody (24334-1-AP) at dilution of 1:200 and CoraLite®488-Conjugated AffiniPure Goat Anti-Rabbit IgG(H+L) (SA00013-2).



HeLa cells were subjected to SDS PAGE followed by western blot with 24334-1-AP (ANKRD16 Antibody) at dilution of 1:600 incubated at room temperature for 1.5 hours.



Immunohistochemical analysis of paraffin-embedded human ovary cancer tissue slide using 24334-1-AP (ANKRD16 antibody) at dilution of 1:500 (under 20x lens). Heat mediated antigen retrieval with Tris-EDTA buffer (pH 9.0).