

For Research Use Only

# Cadherin-17 Polyclonal antibody

Catalog Number: 24339-1-AP **5 Publications**



## Basic Information

<b>Catalog Number:</b> 24339-1-AP	<b>GenBank Accession Number:</b> BC113464	<b>Purification Method:</b> Antigen affinity purification
<b>Size:</b> 150ul, Concentration: 700 µg/ml by Nanodrop and 407 µg/ml by Bradford method using BSA as the standard;	<b>GeneID (NCBI):</b> 1015	<b>Recommended Dilutions:</b> WB 1:1000-1:4000 IHC 1:20-1:200
<b>Source:</b> Rabbit	<b>UNIPROT ID:</b> Q12864	
<b>Isotype:</b> IgG	<b>Full Name:</b> cadherin 17, LI cadherin (liver-intestine)	
<b>Immunogen Catalog Number:</b> AG19488	<b>Calculated MW:</b> 832 aa, 92 kDa	
	<b>Observed MW:</b> 100-125 kDa	

## Applications

### Tested Applications:

IHC, WB, ELISA

### Cited Applications:

IF, IHC, IP, WB

### Species Specificity:

human, mouse

### Cited Species:

human

**Note-IHC: suggested antigen retrieval with TE buffer pH 9.0; (\*) Alternatively, antigen retrieval may be performed with citrate buffer pH 6.0**

### Positive Controls:

**WB:** mouse small intestine tissue, mouse colon tissue

**IHC:** human colon tissue, human stomach cancer tissue, mouse colon tissue

## Background Information

Cadherin-17, also known as LI-cadherin, is a member of the cadherin superfamily. Cadherins are transmembrane proteins that mediate cell-cell adhesion, play important roles during embryogenesis, and is crucial for tissue morphogenesis and maintenance. Cadherin-17 is a component of the gastrointestinal tract and pancreatic ducts and is involved in intestinal peptide transport. It may also play a role in the morphological organization of liver and intestine.

## Notable Publications

Author	Pubmed ID	Journal	Application
Yanmei Zhang	32579167	Jpn J Clin Oncol	IHC
Norihiro Kotani	36152751	J Biol Chem	WB
Ethan V Abel	30074477	Elife	WB

## Storage

### Storage:

Store at -20°C. Stable for one year after shipment.

### Storage Buffer:

PBS with 0.02% sodium azide and 50% glycerol pH 7.3.

Aliquoting is unnecessary for -20°C storage

\*\*\* 20ul sizes contain 0.1% BSA

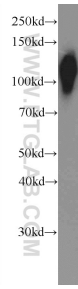
For technical support and original validation data for this product please contact:

T: 1 (888) 4PTGLAB (1-888-478-4522) (toll free in USA), or 1(312) 455-8498 (outside USA)

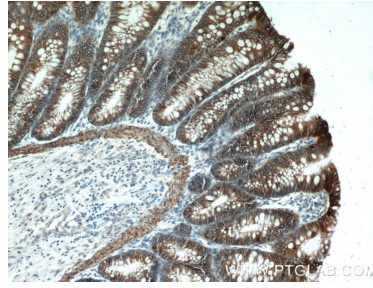
E: proteintech@ptglab.com  
W: ptglab.com

**This product is exclusively available under Proteintech Group brand and is not available to purchase from any other manufacturer.**

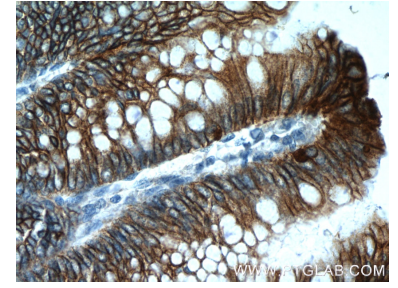
## Selected Validation Data



mouse small intestine tissue were subjected to SDS PAGE followed by western blot with 24339-1-AP (Cadherin-17 antibody at dilution of 1:2000 incubated at room temperature for 1.5 hours.



Immunohistochemical analysis of paraffin-embedded human colon tissue slide using 24339-1-AP (Cadherin-17 antibody at dilution of 1:200 (under 10x lens).



Immunohistochemical analysis of paraffin-embedded human colon tissue slide using 24339-1-AP (Cadherin-17 antibody at dilution of 1:200 (under 40x lens).